

SYCM rabbit pAb

Cat No.:ES12869

For research use only

Overview

Product Name	SYCM rabbit pAb
Host species	Rabbit
Applications	WB
Species Cross-Reactivity	Human; Mouse
Recommended dilutions	WB 1:500-2000
Immunogen	Synthesized peptide derived from human SYCM AA range: 95-145
Specificity	This antibody detects endogenous levels of SYCM at Human/Mouse
Formulation	Liquid in PBS containing 50% glycerol, 0.5% BSA and 0.02% sodium azide.
Storage	Store at -20°C. Avoid repeated freeze-thaw cycles.
Protein Name	SYCM
Gene Name	CARS2 OK/SW-cl.10
Cellular localization	Mitochondrion matrix .
Purification	The antibody was affinity-purified from rabbit antiserum by affinity-chromatography using epitope-specific immunogen.
Clonality	Polyclonal
Concentration	1 mg/ml
Observed band	60kD
Human Gene ID	79587
Human Swiss-Prot Number	Q9HA77
Alternative Names	Probable cysteine--tRNA ligase, mitochondrial (EC 6.1.1.16) (CysteinyI-tRNA synthetase) (CysRS)
Background	This gene encodes a putative member of the class I family of aminoacyl-tRNA synthetases. These enzymes play a critical role in protein biosynthesis by charging tRNAs with their cognate amino acids. This protein is encoded by the nuclear genome but is likely to be imported to the mitochondrion where it is thought to catalyze the ligation of cysteine to tRNA molecules. A splice-site mutation in this gene

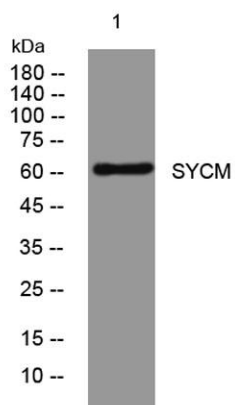




ELK Biotechnology

has been associated with a novel progressive myoclonic epilepsy disease with similar symptoms to MERRF syndrome. [provided by RefSeq, Mar 2015],

Western blot analysis of lysates from 3T3 cells, primary antibody was diluted at 1:1000, 4° over night



+86-27-59760950

ELKbio@ELKbiotech.com

www.elkbiotech.com

23-2, No.388 Gaoxin 2nd Road, Wuhan East Lake Hi-tech Development Zone, Hubei, P.R.C.