



CBPC4 rabbit pAb

Cat No.:ES17823

For research use only

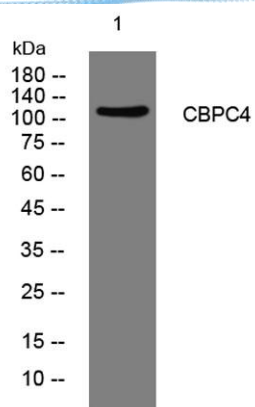
Overview

Product Name	CBPC4 rabbit pAb
Host species	Rabbit
Applications	WB
Species Cross-Reactivity	Human; Mouse
Recommended dilutions	WB 1: 500-2000
Immunogen	Synthesized peptide derived from human CBPC4 AA range: 723-773
Specificity	This antibody detects endogenous levels of CBPC4 at Human/Mouse
Formulation	Liquid in PBS containing 50% glycerol, 0.5% BSA and 0.02% sodium azide.
Storage	Store at -20°C. Avoid repeated freeze-thaw cycles.
Protein Name	CBPC4
Gene Name	AGBL1 CCP4
Cellular localization	Cytoplasm, cytosol .
Purification	The antibody was affinity-purified from rabbit antiserum by affinity-chromatography using epitope-specific immunogen.
Clonality	Polyclonal
Concentration	1 mg/ml
Observed band	
Human Gene ID	123624
Human Swiss-Prot Number	Q96MI9
Alternative Names	
Background	Polyglutamylation is a reversible posttranslational modification catalyzed by polyglutamylases that results in the addition of glutamate side chains on the modified protein. This gene encodes a glutamate decarboxylase that catalyzes the deglutamylation of polyglutamylated proteins. Mutations in this gene result in dominant late-onset Fuchs corneal dystrophy. [provided by RefSeq, Nov 2013],





ELK Biotechnology



Western blot analysis of lysates from K562 cells, primary antibody was diluted at 1:1000, 4° over night



+86-27-59760950

ELKbio@ELKbiotech.com

www.elkbiotech.com

23-2, No.388 Gaoxin 2nd Road, Wuhan East Lake Hi-tech Development Zone, Hubei, P.R.C.