



ELK Biotechnology

# Tubulin alpha rabbit pAb(Caenorhabditis elegans)

Cat No.:ES20848

For research use only

---

## Overview

Product Name	Tubulin alpha rabbit pAb(Caenorhabditis elegans)
Host species	Rabbit
Applications	WB
Species Cross-Reactivity	C.elegans
Recommended dilutions	WB 1:5000-20000
Immunogen	Purified recombinant Full length Tubulin alpha (Caenorhabditis elegans)
Specificity	This antibody detects endogenous levels of Tubulin alpha (Caenorhabditis elegans)
Formulation	Liquid in PBS containing 50% glycerol, 0.5% BSA and 0.02% sodium azide.
Storage	Store at -20°C. Avoid repeated freeze-thaw cycles.
Protein Name	Tubulin alpha
Gene Name	
Cellular localization	
Purification	The antibody was affinity-purified from rabbit antiserum by affinity-chromatography using epitope-specific immunogen.
Clonality	Polyclonal
Concentration	1 mg/ml
Observed band	
Human Gene ID	
Human Swiss-Prot Number	
Alternative Names	Alpha Tubulin
Background	



+86-27-59760950

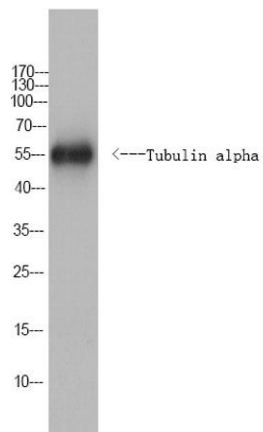
ELKbio@ELKbiotech.com

www.elkbiotech.com

23-2, No.388 Gaoxin 2nd Road,Wuhan East Lake Hi-tech Development Zone, Hubei , P.R.C



**ELK Biotechnology**



Western Blot analysis of *C. elegans* cells using Tubulin alpha rabbit pAb(*Caenorhabditis elegans*). Secondary antibody(catalog#:RS0002) was diluted at 1:20000



+86-27-59760950

ELKbio@ELKbiotech.com

[www.elkbiotech.com](http://www.elkbiotech.com)

23-2, No.388 Gaoxin 2nd Road,Wuhan East Lake Hi-tech Development Zone, Hubei , P.R.C