

# LSM2 Polyclona Antibody

Cat No.:ES15086

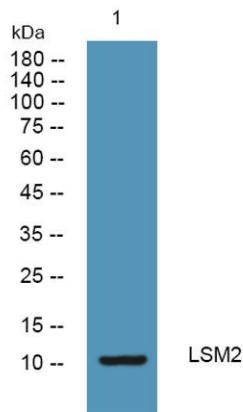
For research use only

## Overview

Product Name	LSM2 Polyclona Antibody
Host species	Rabbit
Applications	WB;IHC;IF;ELISA
Species Cross-Reactivity	Human; Mouse; Rat
Recommended dilutions	Western Blot: 1/500 - 1/2000. Immunohistochemistry: 1/100 - 1/300. Immunofluorescence: 1/200 - 1/1000. ELISA: 1/5000. Not yet tested in other applications.
Immunogen	Synthesized peptide derived from human LSM2 AA range: 33-83
Specificity	This antibody detects endogenous levels of human LSM2
Formulation	Liquid in PBS containing 50% glycerol, 0.5% BSA and 0.02% sodium azide.
Storage	Store at -20°C. Avoid repeated freeze-thaw cycles.
Protein Name	LSM2
Gene Name	LSM2 C6orf28 G7B
Cellular localization	Nucleus .
Purification	The antibody was affinity-purified from rabbit antiserum by affinity-chromatography using epitope-specific immunogen.
Clonality	Polyclonal
Concentration	1 mg/ml
Observed band	
Human Gene ID	57819
Human Swiss-Prot Number	Q9Y333
Alternative Names	U6 snRNA-associated Sm-like protein LSm2 (Protein G7b;Small nuclear ribonuclear protein D homolog;snRNP core Sm-like protein Sm-x5)
Background	This gene encodes a member of the LSm family of RNA-binding proteins. LSm proteins form stable heteromers that bind specifically to the 3'-terminal oligo(U) tract of U6 snRNA and may play a role in



pre-mRNA splicing by mediating U4/U6 snRNP formation. Pseudogenes of this gene are located on the short arm of chromosomes 6 and 19. [provided by RefSeq, Nov 2011],



Western blot analysis of lysates from Jarkat cells, primary antibody was diluted at 1:1000, 4° over night

Immunohistochemical analysis of paraffin-embedded human tonsil. 1, Antibody was diluted at 1:200(4° overnight). 2, Tris-EDTA, pH 9.0 was used for antigen retrieval. 3, Secondary antibody was diluted at 1:200(room temperature, 45min).

