

# Shh rabbit pAb

Cat No.:ES13122

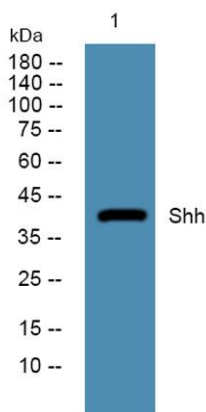
For research use only

## Overview

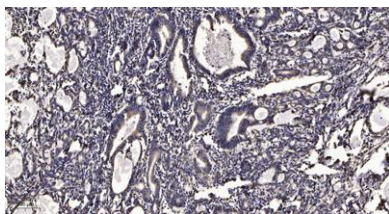
Product Name	Shh rabbit pAb
Host species	Rabbit
Applications	IHC;IF;WB
Species Cross-Reactivity	Human; Mouse; Rat
Recommended dilutions	IHC-p 1:50-200, WB 1:500-2000
Immunogen	Synthesized peptide derived from human Shh
Specificity	This antibody detects endogenous levels of human Shh
Formulation	Liquid in PBS containing 50% glycerol, 0.5% BSA and 0.02% sodium azide.
Storage	Store at -20°C. Avoid repeated freeze-thaw cycles.
Protein Name	Shh
Gene Name	SHH
Cellular localization	Endoplasmic reticulum membrane . Golgi apparatus membrane . Co-localizes with HHAT in the ER and Golgi membrane. .; [Sonic hedgehog protein N-product]: Cell membrane ; Lipid-anchor . The dual-lipidated sonic hedgehog protein N-product (ShhNp) is firmly te
Purification	The antibody was affinity-purified from rabbit antiserum by affinity-chromatography using epitope-specific immunogen.
Clonality	Polyclonal
Concentration	1 mg/ml
Observed band	40kD
Human Gene ID	6469
Human Swiss-Prot Number	Q15465
Alternative Names	Sonic hedgehog protein (SHH;HHG-1) [Cleaved into: Sonic hedgehog protein N-product; Sonic hedgehog protein C-product]
Background	This gene encodes a protein that is instrumental in patterning the early embryo. It has been implicated as the key inductive signal in patterning of the



ventral neural tube, the anterior-posterior limb axis, and the ventral somites. Of three human proteins showing sequence and functional similarity to the sonic hedgehog protein of *Drosophila*, this protein is the most similar. The protein is made as a precursor that is autocatalytically cleaved; the N-terminal portion is soluble and contains the signalling activity while the C-terminal portion is involved in precursor processing. More importantly, the C-terminal product covalently attaches a cholesterol moiety to the N-terminal product, restricting the N-terminal product to the cell surface and preventing it from freely diffusing throughout the developing embryo. Defects in this protein or in its signalling pathway are a cause of holoprosencephaly (HPE), a d



Western blot analysis of lysates from Jarkat cells, primary antibody was diluted at 1:1000, 4° over night



Immunohistochemical analysis of paraffin-embedded human Gastric adenocarcinoma. 1, Antibody was diluted at 1:200(4° overnight). 2, Tris-EDTA, pH9.0 was used for antigen retrieval. 3, Secondary antibody was diluted at 1:200(room temperature, 45min).

