

AL2CL rabbit pAb

Cat No.:ES18408

For research use only

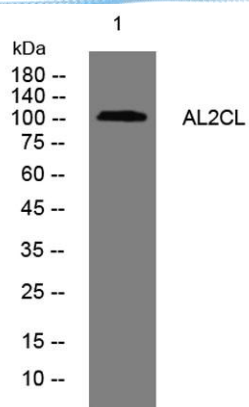
Overview

Product Name	AL2CL rabbit pAb
Host species	Rabbit
Applications	WB
Species Cross-Reactivity	Human; Mouse
Recommended dilutions	WB 1:500-2000
Immunogen	Synthesized peptide derived from human AL2CL AA range: 606-656
Specificity	This antibody detects endogenous levels of AL2CL at Human/Mouse
Formulation	Liquid in PBS containing 50% glycerol, 0.5% BSA and 0.02% sodium azide.
Storage	Store at -20°C. Avoid repeated freeze-thaw cycles.
Protein Name	AL2CL
Gene Name	ALS2CL
Cellular localization	Cytoplasm . Distributed onto the vesicular compartments in the cytoplasm with strong punctated staining. Colocalizes with RAB5A onto the vesicular/membranous compartments in the cytoplasm, particularly to the leading edges of the cells.
Purification	The antibody was affinity-purified from rabbit antiserum by affinity-chromatography using epitope-specific immunogen.
Clonality	Polyclonal
Concentration	1 mg/ml
Observed band	105kD
Human Gene ID	259173
Human Swiss-Prot Number	Q60I27
Alternative Names	ALS2 C-terminal-like protein
Background	





ELK Biotechnology



Western blot analysis of lysates from HuvEc cells, primary antibody was diluted at 1:1000, 4° over night



+86-27-59760950

ELKbio@ELKbiotech.com

www.elkbiotech.com

23-2, No.388 Gaoxin 2nd Road, Wuhan East Lake Hi-tech Development Zone, Hubei, P.R.C.