

# PIFO rabbit pAb

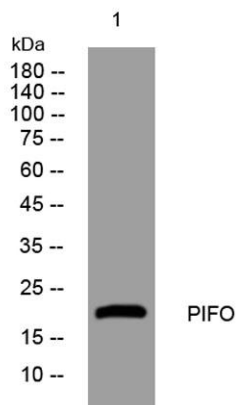
Cat No.:ES14114

For research use only

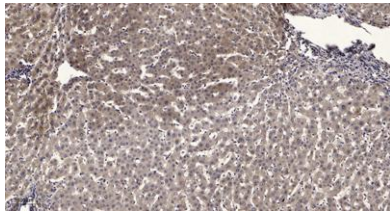
## Overview

Product Name	PIFO rabbit pAb
Host species	Rabbit
Applications	WB;ELISA;IHC
Species Cross-Reactivity	Human; Mouse
Recommended dilutions	WB 1:500-2000;IHC-p 1:50-300; ELISA 2000-20000
Immunogen	Synthesized peptide derived from human PIFO AA range: 47-97
Specificity	This antibody detects endogenous levels of PIFO at Human/Mouse
Formulation	Liquid in PBS containing 50% glycerol, 0.5% BSA and 0.02% sodium azide.
Storage	Store at -20°C. Avoid repeated freeze-thaw cycles.
Protein Name	PIFO
Gene Name	PIFO C1orf88
Cellular localization	Cytoplasmic vesicle . Golgi apparatus, trans-Golgi network . Cytoplasm . Accumulates specifically at the basal body and ciliary necklace during the early steps of cilia assembly and disassembly, when structural, functional and regulatory proteins are deli
Purification	The antibody was affinity-purified from rabbit antiserum by affinity-chromatography using epitope-specific immunogen.
Clonality	Polyclonal
Concentration	1 mg/ml
Observed band	
Human Gene ID	128344
Human Swiss-Prot Number	Q8TCI5
Alternative Names	
Background	





Western blot analysis of lysates from SH-SY5Y cells, primary antibody was diluted at 1:1000, 4° over night



Immunohistochemical analysis of paraffin-embedded human liver cancer. 1, Antibody was diluted at 1:200(4° overnight). 2, Tris-EDTA, pH9.0 was used for antigen retrieval. 3, Secondary antibody was diluted at 1:200(room temperature, 45min).

