



ITGA3 (heavy chain, Cleaved-Phe33) rabbit pAb

Cat No.:ES20005

For research use only

Overview

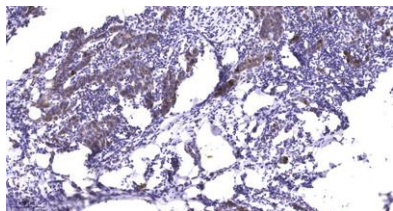
Product Name	ITGA3 (heavy chain, Cleaved-Phe33) rabbit pAb
Host species	Rabbit
Applications	WB;IF;ELISA;IHC
Species Cross-Reactivity	Human;Mouse;Rat
Recommended dilutions	WB 1:500-2000; IF/ICC 1:50-200;ELISA 1:2000-20000;IHC-p 1:50-200
Immunogen	Synthesized peptide derived from human ITGA3 (heavy chain, Cleaved-Phe33)
Specificity	This antibody detects endogenous levels of Human,Mouse,Rat ITGA3 (heavy chain, Cleaved-Phe33, protein was cleaved amino acid sequence between 32-33)
Formulation	Liquid in PBS containing 50% glycerol, 0.5% BSA and 0.02% sodium azide.
Storage	Store at -20°C. Avoid repeated freeze-thaw cycles.
Protein Name	ITGA3 (heavy chain, Cleaved-Phe33)
Gene Name	ITGA3 MSK18
Cellular localization	Cell membrane ; Single-pass type I membrane protein . Cell membrane ; Lipid-anchor . Cell projection, invadopodium membrane ; Single-pass type I membrane protein . Cell projection, filopodium membrane ; Single-pass type I membrane protein . Enriched prefe
Purification	The antibody was affinity-purified from rabbit antiserum by affinity-chromatography using epitope-specific immunogen.
Clonality	Polyclonal
Concentration	1 mg/ml
Observed band	93 115kD
Human Gene ID	3675
Human Swiss-Prot Number	P26006
Alternative Names	Integrin alpha-3 (CD49 antigen-like family member





Background

C;FRP-2;Galactoprotein B3;GAPB3;VLA-3 subunit alpha;CD antigen CD49c) [Cleaved into: Integrin alpha-3 heavy chain; Integrin alpha-3 light chain] integrin subunit alpha 3(ITGA3) Homo sapiens
The gene encodes a member of the integrin alpha chain family of proteins. Integrins are heterodimeric integral membrane proteins composed of an alpha chain and a beta chain that function as cell surface adhesion molecules. The encoded preproprotein is proteolytically processed to generate light and heavy chains that comprise the alpha 3 subunit. This subunit joins with a beta 1 subunit to form an integrin that interacts with extracellular matrix proteins including members of the laminin family. Expression of this gene may be correlated with breast cancer metastasis. [provided by RefSeq, Oct 2015],



Immunohistochemical analysis of paraffin-embedded human Breast cancer. 1, Antibody was diluted at 1:200(4° overnight). 2, Tris-EDTA,pH9.0 was used for antigen retrieval. 3,Secondary antibody was diluted at 1:200(room temperature, 45min).

