

WDR85 rabbit pAb

Cat No.:ES12308

For research use only

Overview

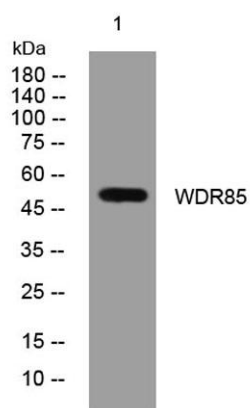
Product Name	WDR85 rabbit pAb
Host species	Rabbit
Applications	WB
Species Cross-Reactivity	Human; Mouse
Recommended dilutions	WB 1: 500-2000
Immunogen	Synthesized peptide derived from human WDR85 AA range: 205-255
Specificity	This antibody detects endogenous levels of WDR85 at Human/Mouse
Formulation	Liquid in PBS containing 50% glycerol, 0.5% BSA and 0.02% sodium azide.
Storage	Store at -20°C. Avoid repeated freeze-thaw cycles.
Protein Name	WDR85
Gene Name	WDR85 C9orf112
Cellular localization	
Purification	The antibody was affinity-purified from rabbit antiserum by affinity-chromatography using epitope-specific immunogen.
Clonality	Polyclonal
Concentration	1 mg/ml
Observed band	
Human Gene ID	92715
Human Swiss-Prot Number	Q9BTV6
Alternative Names	
Background	Diphthamide is a post-translationally modified histidine residue present in elongation factor 2, and is the target of diphtheria toxin. This gene encodes a protein that contains a WD-40 domain, and is thought to be involved in diphthamide biosynthesis. A similar protein in yeast functions as a methylesterase, converting methylated diphthine to diphthine, which can then undergo amidation to produce diphthamide. [provided by RefSeq, Oct





ELK Biotechnology

2016],



Western blot analysis of lysates from K562 cells, primary antibody was diluted at 1:1000, 4° over night



+86-27-59760950

ELKbio@ELKbiotech.com

www.elkbiotech.com

23-2, No.388 Gaoxin 2nd Road, Wuhan East Lake Hi-tech Development Zone, Hubei, P.R.C.