

HP1γ (phospho-Ser83) rabbit pAb

Cat No.:ES15682

For research use only

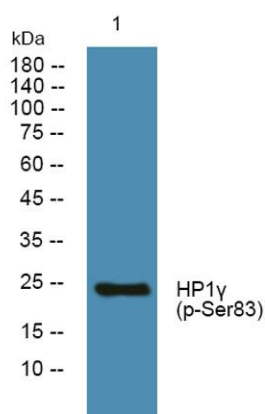
Overview

Product Name	HP1γ (phospho-Ser83) rabbit pAb
Host species	Rabbit
Applications	WB
Species Cross-Reactivity	Human;Mouse;Rat
Recommended dilutions	WB 1:1000-2000
Immunogen	Synthesized phospho peptide around human HP1γ (Ser83)
Specificity	This antibody detects endogenous levels of Human Mouse Rat HP1γ (phospho-Ser83)
Formulation	Liquid in PBS containing 50% glycerol, 0.5% BSA and 0.02% sodium azide.
Storage	Store at -20°C. Avoid repeated freeze-thaw cycles.
Protein Name	HP1γ (Ser83)
Gene Name	CBX3
Cellular localization	Nucleus . Associates with euchromatin and is largely excluded from constitutive heterochromatin. May be associated with microtubules and mitotic poles during mitosis (Potential). .
Purification	The antibody was affinity-purified from rabbit antiserum by affinity-chromatography using epitope-specific immunogen.
Clonality	Polyclonal
Concentration	1 mg/ml
Observed band	24kD
Human Gene ID	11335
Human Swiss-Prot Number	Q13185
Alternative Names	Chromobox protein homolog 3 (HECH) (Heterochromatin protein 1 homolog gamma) (HP1 gamma) (Modifier 2 protein)
Background	At the nuclear envelope, the nuclear lamina and heterochromatin are adjacent to the inner nuclear membrane. The protein encoded by this gene binds DNA and is a component of heterochromatin. This





protein also can bind lamin B receptor, an integral membrane protein found in the inner nuclear membrane. The dual binding functions of the encoded protein may explain the association of heterochromatin with the inner nuclear membrane. This protein binds histone H3 tails methylated at Lys-9 sites. This protein is also recruited to sites of ultraviolet-induced DNA damage and double-strand breaks. Two transcript variants encoding the same protein but differing in the 5' UTR, have been found for this gene.[provided by RefSeq, Mar 2011],



Western blot analysis of lysates from SH-SY5Y cells,
primary antibody was diluted at 1:1000, 4° over night

