

# KCMF1 rabbit pAb

Cat No.:ES15349

For research use only

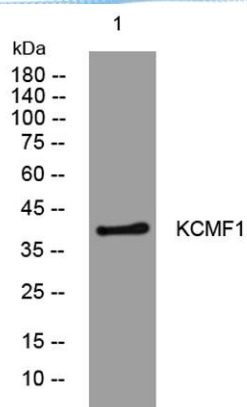
## Overview

|                          |   |
|--------------------------|---|
| Product Name             | KCMF1 rabbit pAb  |
| Host species             | Rabbit  |
| Applications             | WB  |
| Species Cross-Reactivity | Human; Mouse  |
| Recommended dilutions    | WB 1: 500-2000  |
| Immunogen                | Synthesized peptide derived from human KCMF1 AA range: 126-176  |
| Specificity              | This antibody detects endogenous levels of KCMF1 at Human/Mouse   |
| Formulation              | Liquid in PBS containing 50% glycerol, 0.5% BSA and 0.02% sodium azide.   |
| Storage                  | Store at -20°C. Avoid repeated freeze-thaw cycles.  |
| Protein Name             | KCMF1   |
| Gene Name                | KCMF1 FIGC ZZZ1   |
| Cellular localization    |   |
| Purification             | The antibody was affinity-purified from rabbit antiserum by affinity-chromatography using epitope-specific immunogen. |
| Clonality                | Polyclonal  |
| Concentration            | 1 mg/ml   |
| Observed band            |   |
| Human Gene ID            | 56888   |
| Human Swiss-Prot Number  | Q9P0J7  |
| Alternative Names        |   |
| Background               |   |





**ELK Biotechnology**



Western blot analysis of lysates from MCF-7 cells, primary antibody was diluted at 1:1000, 4° over night



+86-27-59760950

ELKbio@ELKbiotech.com

[www.elkbiotech.com](http://www.elkbiotech.com)

23-2, No.388 Gaoxin 2nd Road, Wuhan East Lake Hi-tech Development Zone, Hubei, P.R.C.