

WDFY2 rabbit pAb

Cat No.:ES12325

For research use only

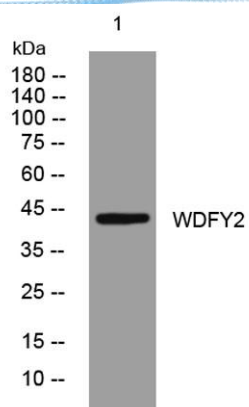
Overview

Product Name	WDFY2 rabbit pAb
Host species	Rabbit
Applications	WB
Species Cross-Reactivity	Human; Mouse
Recommended dilutions	WB 1: 500-2000
Immunogen	Synthesized peptide derived from human WDFY2 AA range: 344-394
Specificity	This antibody detects endogenous levels of WDFY2 at Human/Mouse
Formulation	Liquid in PBS containing 50% glycerol, 0.5% BSA and 0.02% sodium azide.
Storage	Store at -20°C. Avoid repeated freeze-thaw cycles.
Protein Name	WDFY2
Gene Name	WDFY2 WDF2 ZFYVE22
Cellular localization	Endosome . Early endosome . Cytoplasm . Localizes to intracellular vesicles (PubMed:16792529). Colocalizes with VAMP2 and PRKCZ in intracellular vesicles (PubMed:17313651). Colocalizes with AKT2 in early endosomes (By similarity). .
Purification	The antibody was affinity-purified from rabbit antiserum by affinity-chromatography using epitope-specific immunogen.
Clonality	Polyclonal
Concentration	1 mg/ml
Observed band	
Human Gene ID	115825
Human Swiss-Prot Number	Q96P53
Alternative Names	
Background	This gene encodes a protein that contains two WD domains and an FYVE zinc finger region. The function of this gene is unknown. An alternatively spliced transcript variant of this gene may exist. [provided by RefSeq, Jul 2008],





ELK Biotechnology



Western blot analysis of lysates from HeLa cells, primary antibody was diluted at 1:1000, 4° over night



+86-27-59760950

ELKbio@ELKbiotech.com

www.elkbiotech.com

23-2, No.388 Gaoxin 2nd Road, Wuhan East Lake Hi-tech Development Zone, Hubei, P.R.C.