

AP2S1 rabbit pAb

Cat No.:ES18307

For research use only

Overview

Product Name	AP2S1 rabbit pAb
Host species	Rabbit
Applications	WB
Species Cross-Reactivity	Human; Mouse;Rat
Recommended dilutions	WB 1: 500-2000
Immunogen	Synthesized peptide derived from human AP2S1 AA range: 26-76
Specificity	This antibody detects endogenous levels of AP2S1 at Human/Mouse/Rat
Formulation	Liquid in PBS containing 50% glycerol, 0.5% BSA and 0.02% sodium azide.
Storage	Store at -20°C. Avoid repeated freeze-thaw cycles.
Protein Name	AP2S1
Gene Name	AP2S1 AP17 CLAPS2
Cellular localization	Cell membrane. Membrane, coated pit; Peripheral membrane protein; Cytoplasmic side. AP-2 appears to be excluded from internalizing CCVs and to disengage from sites of endocytosis seconds before internalization of the nascent CCV. .
Purification	The antibody was affinity-purified from rabbit antiserum by affinity-chromatography using epitope-specific immunogen.
Clonality	Polyclonal
Concentration	1 mg/ml
Observed band	
Human Gene ID	1175
Human Swiss-Prot Number	P53680
Alternative Names	
Background	One of two major clathrin-associated adaptor complexes, AP-2, is a heterotetramer which is associated with the plasma membrane. This complex is composed of two large chains, a medium chain, and a small chain. This gene encodes the

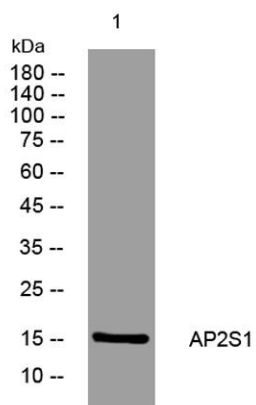




ELK Biotechnology

small chain of this complex. Alternative splicing results in multiple transcript variants. [provided by RefSeq, Jul 2014],

Western blot analysis of lysates from HpeG2 cells, primary antibody was diluted at 1:1000, 4°over night



+86-27-59760950

ELKbio@ELKbiotech.com

www.elkbiotech.com

23-2, No.388 Gaoxin 2nd Road,Wuhan East Lake Hi-tech Development Zone, Hubei , P.R.C