

# cGAS rabbit pAb

Cat No.:ES15063

For research use only

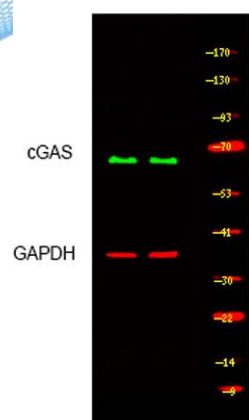
## Overview

Product Name	cGAS rabbit pAb
Host species	Rabbit
Applications	WB
Species Cross-Reactivity	Human;Rat;Mouse;
Recommended dilutions	WB 1: 500-2000
Immunogen	Synthesized peptide derived from human M21D1 AA range: 35-85
Specificity	This antibody detects endogenous levels of M21D1 at Human
Formulation	Liquid in PBS containing 50% glycerol, 0.5% BSA and 0.02% sodium azide.
Storage	Store at -20°C. Avoid repeated freeze-thaw cycles.
Protein Name	M21D1
Gene Name	MB21D1 cGAS C6orf150
Cellular localization	Nucleus . Chromosome . Cell membrane ; Peripheral membrane protein . Cytoplasm, cytosol . Mainly localizes in the nucleus, and at low level in the cytosol (PubMed:31808743, PubMed:31544964). On chromosomes, enriched on centromeric satellite and LINE DNA r
Purification	The antibody was affinity-purified from rabbit antiserum by affinity-chromatography using epitope-specific immunogen.
Clonality	Polyclonal
Concentration	1 mg/ml
Observed band	
Human Gene ID	115004
Human Swiss-Prot Number	Q8N884
Alternative Names	
Background	





**ELK Biotechnology**



Western blot analysis of lysates from MCF-7 and THP1 cells, primary antibody was diluted at 1:1000, 4° over night



+86-27-59760950

[ELKbio@ELKbiotech.com](mailto:ELKbio@ELKbiotech.com)

[www.elkbiotech.com](http://www.elkbiotech.com)

23-2, No.388 Gaoxin 2nd Road, Wuhan East Lake Hi-tech Development Zone, Hubei, P.R.C.