

REXON rabbit pAb

Cat No.:ES13418

For research use only

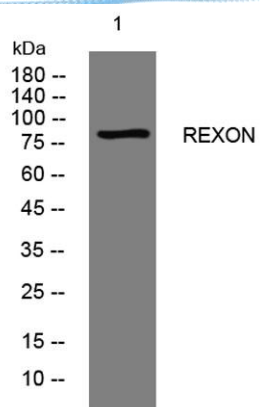
Overview

Product Name	REXON rabbit pAb
Host species	Rabbit
Applications	WB
Species Cross-Reactivity	Human;Rat
Recommended dilutions	WB 1:500-2000
Immunogen	Synthesized peptide derived from human REXON AA range: 582-632
Specificity	This antibody detects endogenous levels of REXON at Human/Rat
Formulation	Liquid in PBS containing 50% glycerol, 0.5% BSA and 0.02% sodium azide.
Storage	Store at -20°C. Avoid repeated freeze-thaw cycles.
Protein Name	REXON
Gene Name	44M2.3
Cellular localization	nucleolus,extracellular exosome,
Purification	The antibody was affinity-purified from rabbit antiserum by affinity-chromatography using epitope-specific immunogen.
Clonality	Polyclonal
Concentration	1 mg/ml
Observed band	85kD
Human Gene ID	81691
Human Swiss-Prot Number	Q96IC2
Alternative Names	Putative RNA exonuclease NEF-sp (EC 3.1.-.-)
Background	





ELK Biotechnology



Western blot analysis of lysates from HpeG2 cells, primary antibody was diluted at 1:1000, 4° over night



+86-27-59760950

ELKbio@ELKbiotech.com

www.elkbiotech.com

23-2, No.388 Gaoxin 2nd Road, Wuhan East Lake Hi-tech Development Zone, Hubei, P.R.C.