

Rac1/CDC42 (Phospho Ser71) rabbit pAb

Cat No.:ES20202

For research use only

Overview

Product Name	Rac1/CDC42 (Phospho Ser71) rabbit pAb
Host species	Rabbit
Applications	WB;ELISA;IHC
Species Cross-Reactivity	Human;Mouse;Rat
Recommended dilutions	WB 1:500-2000;IHC-p 1:50-300; ELISA 2000-20000
Immunogen	Synthesized peptide derived from human Rac1/CDC42 (Phospho Ser71)
Specificity	This antibody detects endogenous levels of Human,Mouse,Rat Rac1/CDC42 (Phospho Ser71)
Formulation	Liquid in PBS containing 50% glycerol, 0.5% BSA and 0.02% sodium azide.
Storage	Store at -20°C. Avoid repeated freeze-thaw cycles.
Protein Name	Rac1/CDC42 (Phospho Ser71)
Gene Name	RAC1 TC25 MIG5
Cellular localization	Cell membrane ; Lipid-anchor ; Cytoplasmic side . Melanosome . Cytoplasm . Cell projection, lamellipodium . Cell projection, dendrite . Cell junction, synapse . Nucleus . Inner surface of plasma membrane possibly with attachment requiring prenylation of the C-terminal cysteine (PubMed:1903399). Identified by mass spectrometry in melanosome fractions from stage I to stage IV (PubMed:17081065). Found in the ruffled border (a late endosomal-like compartment in the plasma membrane) of bone-resorbing osteoclasts. Localizes to the lamellipodium in a SH3RF1-dependent manner (By similarity). In macrophages, cytoplasmic location increases upon CSF1 stimulation (By similarity). Activation by GTP-binding promotes nuclear localization (PubMed:12551911)..
Purification	The antibody was affinity-purified from rabbit antiserum by affinity-chromatography using





Clonality

Concentration

Observed band

Human Gene ID

Human Swiss-Prot Number

Alternative Names

epitope-specific immunogen.

Polyclonal

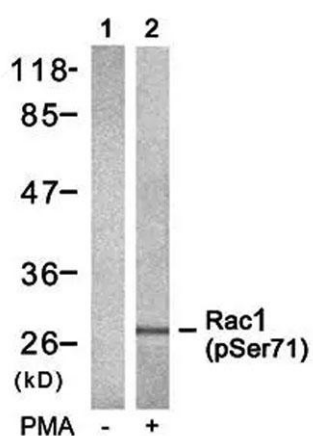
1 mg/ml

5879

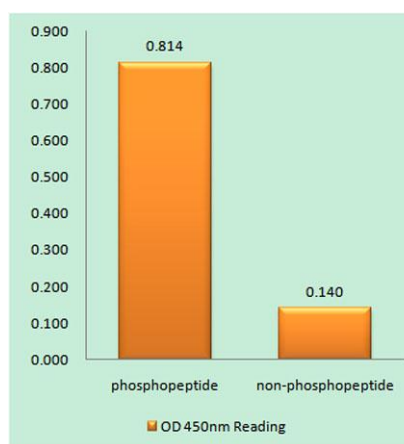
P63000/P15153/P60763/P60953

Ras-related C3 botulinum toxin substrate 1 (Cell migration-inducing gene 5 protein; Ras-like protein TC25; p21-Rac1)

Background

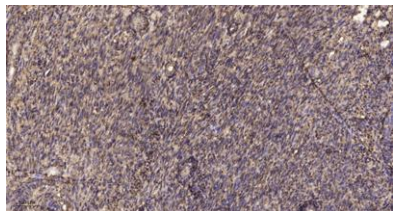


Western blot analysis of Rac1(Phospho-Ser71) antibody in 293 cells lysates, cell treated or untreated with PMA 125ng/ml 30', 4° over night, secondary antibody(cat: RS0002 was diluted at 1:10000, 37° 1hour.

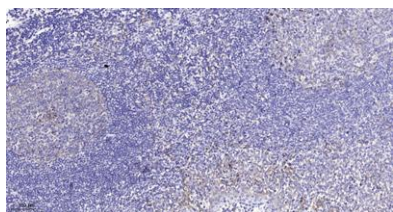


Enzyme-Linked Immunosorbent Assay (Phospho-ELISA) for Immunogen Phosphopeptide (Phospho-left) and Non-Phosphopeptide (Phospho-right), using Rac1(Phospho-Ser71) antibody





Immunohistochemical analysis of paraffin-embedded human uterus. 1, Antibody was diluted at 1:200(4° overnight). 2, Tris-EDTA,pH9.0 was used for antigen retrieval. 3,Secondary antibody was diluted at 1:200(room temperature, 45min).



Immunohistochemical analysis of paraffin-embedded human tonsil. 1, Antibody was diluted at 1:200(4° overnight). 2, Tris-EDTA,pH9.0 was used for antigen retrieval. 3,Secondary antibody was diluted at 1:200(room temperature, 45min).

