

SLC12A4 rabbit pAb

Cat No.:ES20634

For research use only

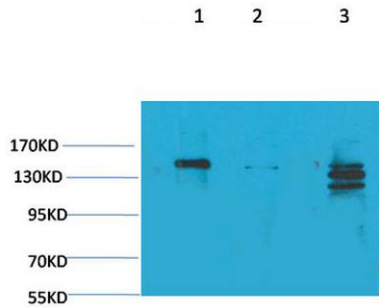
Overview

Product Name	SLC12A4 rabbit pAb
Host species	Rabbit
Applications	WB;IHC;IF
Species Cross-Reactivity	Human;Rat;Mouse
Recommended dilutions	WB 1:1000-2000, IHC 1:100-200
Immunogen	Synthetic Peptide of SLC12A4 AA range: 658-708
Specificity	SLC12A4 protein(A248) detects endogenous levels of SLC12A4
Formulation	Liquid in PBS containing 50% glycerol, 0.5% BSA and 0.02% sodium azide.
Storage	Store at -20°C. Avoid repeated freeze-thaw cycles.
Protein Name	Solute carrier family 12 member 4 (Electroneutral potassium-chloride cotransporter 1) (Erythroid K-Cl cotransporter 1) (hKCC1)
Gene Name	SLC12A4
Cellular localization	Membrane; Multi-pass membrane protein.
Purification	The antibody was affinity-purified from rabbit antiserum by affinity-chromatography using epitope-specific immunogen.
Clonality	Polyclonal
Concentration	1 mg/ml
Observed band	150kD
Human Gene ID	6560
Human Swiss-Prot Number	Q9UP95
Alternative Names	Solute carrier family 12 member 4 (Electroneutral potassium-chloride cotransporter 1;Erythroid K-Cl cotransporter 1;hKCC1)
Background	This gene encodes a member of the SLC12A transporter family. The encoded protein mediates the coupled movement of potassium and chloride ions across the plasma membrane. This gene is expressed ubiquitously. Multiple alternatively spliced transcript variants encoding distinct isoforms

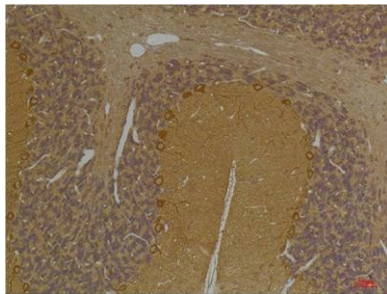


have been found for this gene. [provided by RefSeq, Jan 2013],

Western blot analysis of 1) Rat Brain Tissue, 2) Mouse Brain Tissue, 3) Hela with SLC12A4 Rabbit pAb diluted at 1:2,000.



Immunohistochemical analysis of paraffin-embedded Rat BrainTissue using SLC12A4 Rabbit pAb diluted at 1:200.



Immunohistochemical analysis of paraffin-embedded Mouse BrainTissue using SLC12A4 Rabbit pAb diluted at 1:200.

