

YIPF1 rabbit pAb

Cat No.:ES12263

For research use only

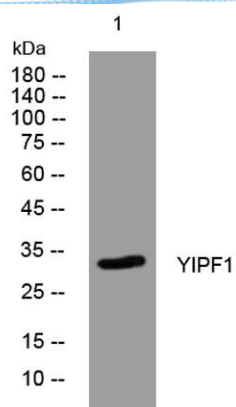
Overview

Product Name	YIPF1 rabbit pAb
Host species	Rabbit
Applications	WB
Species Cross-Reactivity	Human; Mouse;Rat
Recommended dilutions	WB 1: 500-2000
Immunogen	Synthesized peptide derived from human YIPF1 AA range: 223-273
Specificity	This antibody detects endogenous levels of YIPF1 at Human/Mouse/Rat
Formulation	Liquid in PBS containing 50% glycerol, 0.5% BSA and 0.02% sodium azide.
Storage	Store at -20°C. Avoid repeated freeze-thaw cycles.
Protein Name	YIPF1
Gene Name	YIPF1
Cellular localization	Golgi apparatus, cis-Golgi network membrane ; Multi-pass membrane protein . Golgi apparatus, trans-Golgi network membrane . Late endosome membrane . Mainly localizes within medial-/trans-Golgi and trans-Golgi network (TGN), while less so within cis-Golgi.
Purification	The antibody was affinity-purified from rabbit antiserum by affinity-chromatography using epitope-specific immunogen.
Clonality	Polyclonal
Concentration	1 mg/ml
Observed band	
Human Gene ID	54432
Human Swiss-Prot Number	Q9Y548
Alternative Names	
Background	





ELK Biotechnology



Western blot analysis of lysates from HpeG2 cells, primary antibody was diluted at 1:1000, 4° over night



+86-27-59760950

ELKbio@ELKbiotech.com

www.elkbiotech.com

23-2, No.388 Gaoxin 2nd Road, Wuhan East Lake Hi-tech Development Zone, Hubei, P.R.C.