

# RUVB1 rabbit pAb

Cat No.:ES13305

For research use only

## Overview

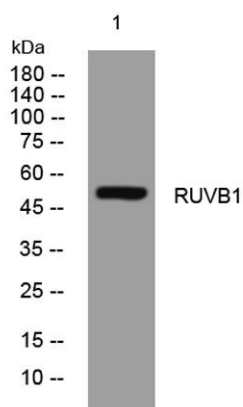
Product Name	RUVB1 rabbit pAb
Host species	Rabbit
Applications	WB
Species Cross-Reactivity	Human; Mouse;Rat
Recommended dilutions	WB 1: 500-2000
Immunogen	Synthesized peptide derived from human RUVB1 AA range: 195-245
Specificity	This antibody detects endogenous levels of RUVB1 at Human/Mouse/Rat
Formulation	Liquid in PBS containing 50% glycerol, 0.5% BSA and 0.02% sodium azide.
Storage	Store at -20°C. Avoid repeated freeze-thaw cycles.
Protein Name	RUVB1
Gene Name	RUVBL1 INO80H NMP238 TIP49 TIP49A
Cellular localization	Nucleus matrix. Nucleus, nucleoplasm. Cytoplasm . Membrane . Cytoplasm, cytoskeleton, microtubule organizing center, centrosome. Dynein axonemal particle . Mainly localized in the nucleus, associated with nuclear matrix or in the nuclear cytosol, although
Purification	The antibody was affinity-purified from rabbit antiserum by affinity-chromatography using epitope-specific immunogen.
Clonality	Polyclonal
Concentration	1 mg/ml
Observed band	
Human Gene ID	8607
Human Swiss-Prot Number	Q9Y265
Alternative Names	
Background	This gene encodes a protein that has both DNA-dependent ATPase and DNA helicase activities and belongs to the ATPases associated with diverse cellular activities (AAA+) protein family. The





**ELK Biotechnology**

encoded protein associates with several multisubunit transcriptional complexes and with protein complexes involved in both ATP-dependent remodeling and histone modification. Alternate splicing results in multiple transcript variants. [provided by RefSeq, Jan 2016],



Western blot analysis of lysates from MCF-7 cells, primary antibody was diluted at 1:1000, 4° over night



+86-27-59760950

ELKbio@ELKbiotech.com

[www.elkbiotech.com](http://www.elkbiotech.com)

23-2, No.388 Gaoxin 2nd Road, Wuhan East Lake Hi-tech Development Zone, Hubei, P.R.C.