

# F8I2 rabbit pAb

Cat No.:ES16590

For research use only

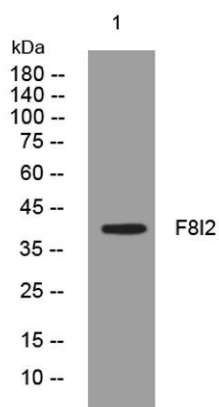
## Overview

Product Name	F8I2 rabbit pAb
Host species	Rabbit
Applications	WB
Species Cross-Reactivity	Human; Mouse
Recommended dilutions	WB 1: 500-2000
Immunogen	Synthesized peptide derived from human F8I2 AA range: 33-83
Specificity	This antibody detects endogenous levels of F8I2 at Human/Mouse
Formulation	Liquid in PBS containing 50% glycerol, 0.5% BSA and 0.02% sodium azide.
Storage	Store at -20°C. Avoid repeated freeze-thaw cycles.
Protein Name	F8I2
Gene Name	F8A1 F8A; F8A2 F8A; F8A3 F8A
Cellular localization	Cytoplasm . Nucleus . Early endosome . Nucleus, nuclear body . Diffuse presence in the cytoplasm and accumulation in the nucleus (PubMed:16476778). In absence of HTT, F8A1/F8A2/F8A3 is concentrated in cytoplasm (By similarity). Colocalized with HTT in endos
Purification	The antibody was affinity-purified from rabbit antiserum by affinity-chromatography using epitope-specific immunogen.
Clonality	Polyclonal
Concentration	1 mg/ml
Observed band	
Human Gene ID	474383
Human Swiss-Prot Number	P23610
Alternative Names	
Background	This gene is contained entirely within intron 22 of the factor VIII gene; spans less than 2 kb, and is transcribed in the direction opposite of factor VIII. A portion of intron 22 (int22h), containing F8A, is





repeated twice extragenically closer to the Xq telomere. Although its function is unknown, the observation that this gene is conserved in the mouse implies it has some function. Unlike factor VIII, this gene is transcribed abundantly in a wide variety of cell types. [provided by RefSeq, Jul 2008],



Western blot analysis of lysates from SW480 cells, primary antibody was diluted at 1:1000, 4° over night

