

# CPO Polyclona Antibody

Cat No.:ES17257

For research use only

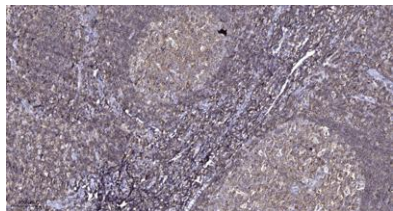
## Overview

Product Name	CPO Polyclona Antibody
Host species	Rabbit
Applications	IHC; ELISA
Species Cross-Reactivity	Human;Rat;Mouse;
Recommended dilutions	IHC-p 1:50-200, ELISA(peptide)1:5000-20000
Immunogen	Synthesized peptide derived from human CPO AA range: 50-100
Specificity	This antibody detects endogenous levels of human CPO
Formulation	Liquid in PBS containing 50% glycerol, 0.5% BSA and 0.02% sodium azide.
Storage	Store at -20°C. Avoid repeated freeze-thaw cycles.
Protein Name	CPO
Gene Name	CPO
Cellular localization	Apical cell membrane ; Lipid-anchor, GPI-anchor .
Purification	The antibody was affinity-purified from rabbit antiserum by affinity-chromatography using epitope-specific immunogen.
Clonality	Polyclonal
Concentration	1 mg/ml
Observed band	
Human Gene ID	130749
Human Swiss-Prot Number	Q8IVL8
Alternative Names	Carboxypeptidase O (CPO;EC 3.4.17.-)
Background	carboxypeptidase O(CPO) Homo sapiens This gene is a member of the metallocarboxypeptidase gene family. [provided by RefSeq, Jan 2011],





**ELK Biotechnology**



Immunohistochemical analysis of paraffin-embedded human tonsil. 1, Antibody was diluted at 1:200(4° overnight). 2, Tris-EDTA,pH9.0 was used for antigen retrieval. 3,Secondary antibody was diluted at 1:200(room temperature, 45min).



+86-27-59760950

[ELKbio@ELKbiotech.com](mailto:ELKbio@ELKbiotech.com)

[www.elkbiotech.com](http://www.elkbiotech.com)

23-2, No.388 Gaoxin 2nd Road,Wuhan East Lake Hi-tech Development Zone, Hubei , P.R.C