

# GABA Transporter 1 rabbit pAb

Cat No.:ES20745

For research use only

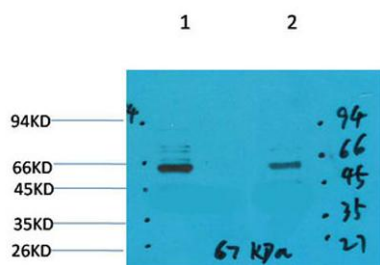
## Overview

Product Name	GABA Transporter 1 rabbit pAb
Host species	Rabbit
Applications	WB;IHC;IF
Species Cross-Reactivity	Human;Rat;Mouse
Recommended dilutions	WB 1:1000-2000, IHC 1:100-200
Immunogen	Synthetic Peptide of GABA Transporter 1 AA range: 329-379
Specificity	GABA Transporter 1 protein(A230) detects endogenous levels of GABA Transporter 1
Formulation	Liquid in PBS containing 50% glycerol, 0.5% BSA and 0.02% sodium azide.
Storage	Store at -20°C. Avoid repeated freeze-thaw cycles.
Protein Name	Sodium- and chloride-dependent GABA transporter 1 (GAT-1) (Solute carrier family 6 member 1)
Gene Name	SLC6A1
Cellular localization	Cell membrane; Multi-pass membrane protein. Membrane; Multi-pass membrane protein. Cell junction, synapse, presynapse . Localized at the plasma membrane and in a subset of intracellular vesicles. Localized at the presynaptic terminals of interneurons (By
Purification	The antibody was affinity-purified from rabbit antiserum by affinity-chromatography using epitope-specific immunogen.
Clonality	Polyclonal
Concentration	1 mg/ml
Observed band	67kD
Human Gene ID	6529
Human Swiss-Prot Number	P30531
Alternative Names	SLC6A1; GABATR; GABT1; GAT1; Sodium- and chloride-dependent GABA transporter 1; GAT-1; Solute carrier family 6 member 1
Background	The SLC6A1 gene encodes a gamma-aminobutyric

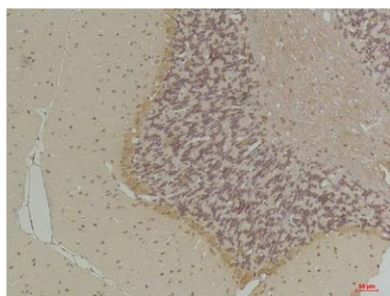


acid (GABA) transporter, which removes GABA from the synaptic cleft (Hirunsatit et al., 2009 [PubMed 19077666]).[supplied by OMIM, Jul 2009],

Western blot analysis of 1) Mouse Brain Tissue, 2) Rat Brain Tissue with GABA Transporter 1 Rabbit pAb diluted at 1:2,000.



Immunohistochemical analysis of paraffin-embedded Rat BrainTissue using GABA Transporter 1 Rabbit pAb diluted at 1:200.



Immunohistochemical analysis of paraffin-embedded Mouse BrainTissue using GABA Transporter 1 Rabbit pAb diluted at 1:200.

