

DEN1B rabbit pAb

Cat No.:ES16970

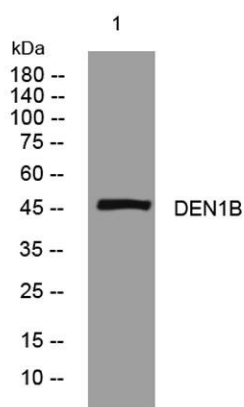
For research use only

Overview

Product Name	DEN1B rabbit pAb
Host species	Rabbit
Applications	WB
Species Cross-Reactivity	Human; Mouse
Recommended dilutions	WB 1: 500-2000
Immunogen	Synthesized peptide derived from human DEN1B AA range: 325-375
Specificity	This antibody detects endogenous levels of DEN1B at Human/Mouse
Formulation	Liquid in PBS containing 50% glycerol, 0.5% BSA and 0.02% sodium azide.
Storage	Store at -20°C. Avoid repeated freeze-thaw cycles.
Protein Name	DEN1B
Gene Name	DENND1B C1orf218 FAM31B
Cellular localization	Cytoplasm, cytosol . Cytoplasmic vesicle, clathrin-coated vesicle .
Purification	The antibody was affinity-purified from rabbit antiserum by affinity-chromatography using epitope-specific immunogen.
Clonality	Polyclonal
Concentration	1 mg/ml
Observed band	
Human Gene ID	163486
Human Swiss-Prot Number	Q6P3S1
Alternative Names	
Background	Clathrin (see MIM 118955)-mediated endocytosis is a major mechanism for internalization of proteins and lipids. Members of the connecdenn family, such as DENND1B, function as guanine nucleotide exchange factors (GEFs) for the early endosomal small GTPase RAB35 (MIM 604199) and bind to clathrin and clathrin adaptor protein-2 (AP2; see MIM 601024). Thus, connecdenns link RAB35



activation with the clathrin machinery (Marat and McPherson, 2010 [PubMed 20154091]).[supplied by OMIM, Nov 2010],



Western blot analysis of lysates from 293T cells, primary antibody was diluted at 1:1000, 4°over night

