



DYM rabbit pAb

Cat No.:ES16842

For research use only

Overview

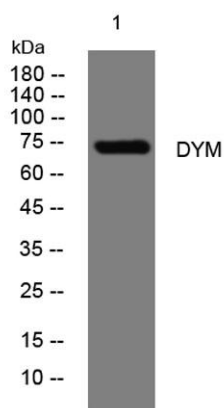
Product Name	DYM rabbit pAb
Host species	Rabbit
Applications	WB
Species Cross-Reactivity	Human; Mouse;Rat
Recommended dilutions	WB 1: 500-2000
Immunogen	Synthesized peptide derived from human DYM AA range: 30-80
Specificity	This antibody detects endogenous levels of DYM at Human/Mouse/Rat
Formulation	Liquid in PBS containing 50% glycerol, 0.5% BSA and 0.02% sodium azide.
Storage	Store at -20°C. Avoid repeated freeze-thaw cycles.
Protein Name	DYM
Gene Name	DYM
Cellular localization	Cytoplasm. Golgi apparatus. Membrane ; Lipid-anchor . Sequence analysis programs clearly predict 1 transmembrane region. However, PubMed:18996921 shows that it is not a stably anchored transmembrane protein but it weakly associates with the Golgi apparatus
Purification	The antibody was affinity-purified from rabbit antiserum by affinity-chromatography using epitope-specific immunogen.
Clonality	Polyclonal
Concentration	1 mg/ml
Observed band	
Human Gene ID	54808
Human Swiss-Prot Number	Q7RTS9
Alternative Names	
Background	This gene encodes a protein which is necessary for normal skeletal development and brain function. Mutations in this gene are associated with two types of recessive osteochondrodysplasia,





ELK Biotechnology

Dyggve-Melchior-Clausen (DMC) dysplasia and Smith-McCort (SMC) dysplasia, which involve both skeletal defects and mental retardation. [provided by RefSeq, Jul 2008],



Western blot analysis of lysates from KB cells, primary antibody was diluted at 1:1000, 4° over night



+86-27-59760950

ELKbio@ELKbiotech.com

www.elkbiotech.com

23-2, No.388 Gaoxin 2nd Road, Wuhan East Lake Hi-tech Development Zone, Hubei, P.R.C.