

# MLEC rabbit pAb

Cat No.:ES14939

For research use only

## Overview

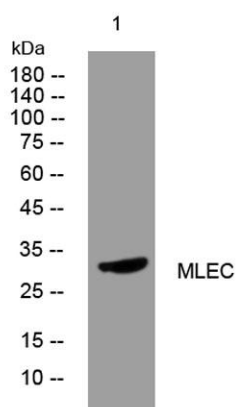
Product Name	MLEC rabbit pAb
Host species	Rabbit
Applications	WB
Species Cross-Reactivity	Human; Mouse;Rat
Recommended dilutions	WB 1: 500-2000
Immunogen	Synthesized peptide derived from human MLEC AA range: 165-215
Specificity	This antibody detects endogenous levels of MLEC at Human/Mouse/Rat
Formulation	Liquid in PBS containing 50% glycerol, 0.5% BSA and 0.02% sodium azide.
Storage	Store at -20°C. Avoid repeated freeze-thaw cycles.
Protein Name	MLEC
Gene Name	MLEC KIAA0152
Cellular localization	Endoplasmic reticulum membrane ; Single-pass type I membrane protein .
Purification	The antibody was affinity-purified from rabbit antiserum by affinity-chromatography using epitope-specific immunogen.
Clonality	Polyclonal
Concentration	1 mg/ml
Observed band	
Human Gene ID	9761
Human Swiss-Prot Number	Q14165
Alternative Names	
Background	This gene encodes the carbohydrate-binding protein malectin which is a Type I membrane-anchored endoplasmic reticulum protein. This protein has an affinity for Glc2Man9GlcNAc2 (G2M9) N-glycans and is involved in regulating glycosylation in the endoplasmic reticulum. This protein has also been shown to interact with ribophorin I and may be involved in the directing the degradation of





**ELK Biotechnology**

misfolded proteins. Alternate splicing results in multiple transcript variants. [provided by RefSeq, Jan 2015],



Western blot analysis of lysates from HpeG2 cells, primary antibody was diluted at 1:1000, 4°over night



+86-27-59760950

ELKbio@ELKbiotech.com

[www.elkbiotech.com](http://www.elkbiotech.com)

23-2, No.388 Gaoxin 2nd Road,Wuhan East Lake Hi-tech Development Zone, Hubei , P.R.C