

IDH3B rabbit pAb

Cat No.:ES11913

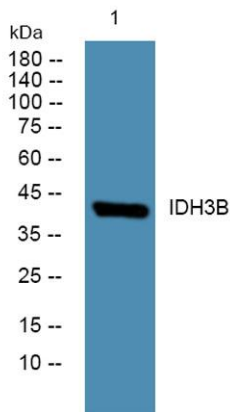
For research use only

Overview

Product Name	IDH3B rabbit pAb
Host species	Rabbit
Applications	WB;ELISA
Species Cross-Reactivity	Human;Rat
Recommended dilutions	WB 1:500-2000 ELISA 1:5000-20000
Immunogen	Synthesized peptide derived from part region of human protein
Specificity	IDH3B Polyclonal Antibody detects endogenous levels of protein.
Formulation	Liquid in PBS containing 50% glycerol, 0.5% BSA and 0.02% sodium azide.
Storage	Store at -20°C. Avoid repeated freeze-thaw cycles.
Protein Name	Isocitrate dehydrogenase [NAD] subunit beta, mitochondrial (EC 1.1.1.41) (Isocitric dehydrogenase subunit beta) (NAD(+)-specific ICDH subunit beta)
Gene Name	IDH3B
Cellular localization	Mitochondrion.
Purification	The antibody was affinity-purified from rabbit antiserum by affinity-chromatography using epitope-specific immunogen.
Clonality	Polyclonal
Concentration	1 mg/ml
Observed band	42kD
Human Gene ID	3420
Human Swiss-Prot Number	O43837
Alternative Names	
Background	isocitrate dehydrogenase 3 (NAD(+)) beta(IDH3B) Homo sapiens Isocitrate dehydrogenases catalyze the oxidative decarboxylation of isocitrate to 2-oxoglutarate. These enzymes belong to two distinct subclasses, one of which utilizes NAD(+) as the electron acceptor and the other NADP(+). Five isocitrate dehydrogenases have been reported:



three NAD(+)-dependent isocitrate dehydrogenases, which localize to the mitochondrial matrix, and two NADP(+)-dependent isocitrate dehydrogenases, one of which is mitochondrial and the other predominantly cytosolic. NAD(+)-dependent isocitrate dehydrogenases catalyze the allosterically regulated rate-limiting step of the tricarboxylic acid cycle. Each isozyme is a heterotetramer that is composed of two alpha subunits, one beta subunit, and one gamma subunit. The protein encoded by this gene is the beta subunit of one isozyme of NAD(+)-dependent isocitrate dehydrogenase. Multiple alternatively spliced transcript va



Western blot analysis of lysates from K562 cells, primary antibody was diluted at 1:1000, 4° over night

