

# SFTA1 rabbit pAb

Cat No.:ES11863

For research use only

## Overview

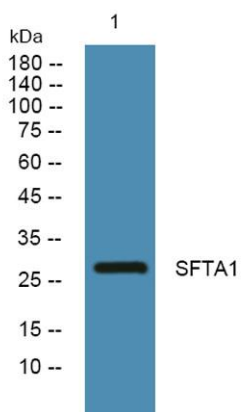
Product Name	SFTA1 rabbit pAb
Host species	Rabbit
Applications	WB;ELISA
Species Cross-Reactivity	Human;Rat;Mouse;
Recommended dilutions	WB 1:500-2000 ELISA 1:5000-20000
Immunogen	Synthesized peptide derived from part region of human protein
Specificity	SFTA1 Polyclonal Antibody detects endogenous levels of protein.
Formulation	Liquid in PBS containing 50% glycerol, 0.5% BSA and 0.02% sodium azide.
Storage	Store at -20°C. Avoid repeated freeze-thaw cycles.
Protein Name	Pulmonary surfactant-associated protein A1 (PSP-A) (PSPA) (SP-A) (SP-A1) (35 kDa pulmonary surfactant-associated protein) (Alveolar proteinosis protein) (Collectin-4)
Gene Name	SFTPA1 COLEC4 PSAP SFTP1 SFTPA SFTPA1B
Cellular localization	Secreted . Secreted, extracellular space, extracellular matrix . Secreted, extracellular space, surface film .
Purification	The antibody was affinity-purified from rabbit antiserum by affinity-chromatography using epitope-specific immunogen.
Clonality	Polyclonal
Concentration	1 mg/ml
Observed band	27kD
Human Gene ID	653509
Human Swiss-Prot Number	Q8IWL2
Alternative Names	
Background	This gene encodes a lung surfactant protein that is a member of a subfamily of C-type lectins called collectins. The encoded protein binds specific carbohydrate moieties found on lipids and on the surface of microorganisms. This protein plays an





**ELK Biotechnology**

essential role in surfactant homeostasis and in the defense against respiratory pathogens. Mutations in this gene are associated with idiopathic pulmonary fibrosis. Alternate splicing results in multiple transcript variants. [provided by RefSeq, May 2010],



Western blot analysis of lysates from KB cells, primary antibody was diluted at 1:1000, 4° over night



+86-27-59760950

[ELKbio@ELKbiotech.com](mailto:ELKbio@ELKbiotech.com)

[www.elkbiotech.com](http://www.elkbiotech.com)

23-2, No.388 Gaoxin 2nd Road, Wuhan East Lake Hi-tech Development Zone, Hubei, P.R.C.