



# PROL4 rabbit pAb

Cat No.:ES11849

For research use only

## Overview

Product Name	PROL4 rabbit pAb
Host species	Rabbit
Applications	WB;ELISA
Species Cross-Reactivity	Human;Rat;Mouse;
Recommended dilutions	WB 1:500-2000 ELISA 1:5000-20000
Immunogen	Synthesized peptide derived from part region of human protein
Specificity	PROL4 Polyclonal Antibody detects endogenous levels of protein.
Formulation	Liquid in PBS containing 50% glycerol, 0.5% BSA and 0.02% sodium azide.
Storage	Store at -20°C. Avoid repeated freeze-thaw cycles.
Protein Name	Proline-rich protein 4 (Lacrimal proline-rich protein) (Nasopharyngeal carcinoma-associated proline-rich protein 4)
Gene Name	PRR4 LPRP PROL4
Cellular localization	Secreted.
Purification	The antibody was affinity-purified from rabbit antiserum by affinity-chromatography using epitope-specific immunogen.
Clonality	Polyclonal
Concentration	1 mg/ml
Observed band	14kD
Human Gene ID	11272
Human Swiss-Prot Number	Q16378
Alternative Names	
Background	proline rich 4 (lacrimal)(PRR4) Homo sapiens This gene encodes a member of the proline-rich protein family that lacks a conserved repetitive domain. This protein may play a role in protective functions in the eye. Alternative splicing result in multiple transcript variants. Read-through transcription also exists between this gene and the

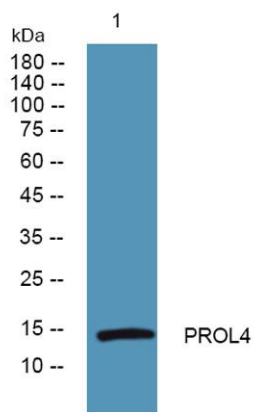




**ELK Biotechnology**

upstream PRH1 (proline-rich protein HaellI subfamily 1) gene. [provided by RefSeq, Feb 2011],

Western blot analysis of lysates from SW480 cells, primary antibody was diluted at 1:1000, 4° over night



+86-27-59760950

ELKbio@ELKbiotech.com

[www.elkbiotech.com](http://www.elkbiotech.com)

23-2, No.388 Gaoxin 2nd Road, Wuhan East Lake Hi-tech Development Zone, Hubei, P.R.C.