

IGKC rabbit pAb

Cat No.:ES11846

For research use only

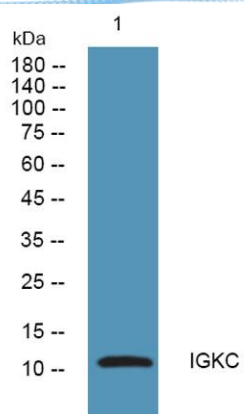
Overview

Product Name	IGKC rabbit pAb
Host species	Rabbit
Applications	WB;ELISA
Species Cross-Reactivity	Human;Rat;Mouse;
Recommended dilutions	WB 1:500-2000 ELISA 1:5000-20000
Immunogen	Synthesized peptide derived from part region of human protein AA range: 1-50
Specificity	IGKC Polyclonal Antibody detects endogenous levels of protein.
Formulation	Liquid in PBS containing 50% glycerol, 0.5% BSA and 0.02% sodium azide.
Storage	Store at -20°C. Avoid repeated freeze-thaw cycles.
Protein Name	Ig kappa chain C region
Gene Name	IGKC
Cellular localization	Secreted . Cell membrane .
Purification	The antibody was affinity-purified from rabbit antiserum by affinity-chromatography using epitope-specific immunogen.
Clonality	Polyclonal
Concentration	1 mg/ml
Observed band	11kD
Human Gene ID	
Human Swiss-Prot Number	P01834
Alternative Names	
Background	miscellaneous:The EU sequence has the INV (3) allotypic marker, Ala-45 and Val-83. The ROY sequence has the INV (1,2) allotypic marker, Ala-45 and Leu-83.,similarity:Contains 1 Ig-like (immunoglobulin-like) domain.,





ELK Biotechnology



Western blot analysis of lysates from K562 cells, primary antibody was diluted at 1:1000, 4° over night



+86-27-59760950

ELKbio@ELKbiotech.com

www.elkbiotech.com

23-2, No.388 Gaoxin 2nd Road, Wuhan East Lake Hi-tech Development Zone, Hubei, P.R.C.