

LT4R1 rabbit pAb

Cat No.:ES11506

For research use only

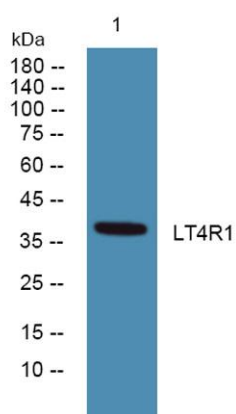
Overview

Product Name	LT4R1 rabbit pAb
Host species	Rabbit
Applications	WB;ELISA
Species Cross-Reactivity	Human;Mouse;Rat
Recommended dilutions	WB 1:500-2000 ELISA 1:5000-20000
Immunogen	Synthesized peptide derived from part region of human protein
Specificity	LT4R1 Polyclonal Antibody detects endogenous levels of protein.
Formulation	Liquid in PBS containing 50% glycerol, 0.5% BSA and 0.02% sodium azide.
Storage	Store at -20°C. Avoid repeated freeze-thaw cycles.
Protein Name	Leukotriene B4 receptor 1 (LTB4-R 1) (LTB4-R1) (Chemoattractant receptor-like 1) (G-protein coupled receptor 16) (P2Y purinoceptor 7) (P2Y7)
Gene Name	LTB4R BLT BLT1 BLTR CMKRL1 GPR16 P2RY7
Cellular localization	Cell membrane; Multi-pass membrane protein.
Purification	The antibody was affinity-purified from rabbit antiserum by affinity-chromatography using epitope-specific immunogen.
Clonality	Polyclonal
Concentration	1 mg/ml
Observed band	38kD
Human Gene ID	1241
Human Swiss-Prot Number	Q15722
Alternative Names	
Background	function:Receptor for extracellular ATP > UTP and ADP. The activity of this receptor is mediated by G proteins which activate a phosphatidylinositol-calcium second messenger system. May be the cardiac P2Y receptor involved in the regulation of cardiac muscle contraction through modulation of L-type calcium currents. Is a receptor





for leukotriene B4, a potent chemoattractant involved in inflammation and immune response.,PTM:Phosphorylated by GRK6 upon leukotriene B4 binding; which promotes desensitization.,similarity:Belongs to the G-protein coupled receptor 1 family.,tissue specificity:Expressed at highest levels in heart, skeletal muscle and at lower levels in brain and liver. High level of expression in lymphoid tissues.,



Western blot analysis of lysates from SH-SY5Y cells, primary antibody was diluted at 1:1000, 4° over night

