

CISD2 rabbit pAb

Cat No.:ES11428

For research use only

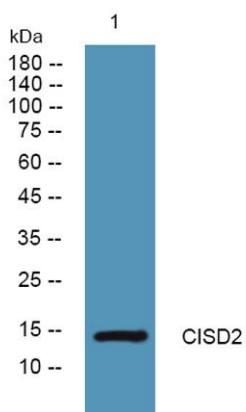
Overview

Product Name	CISD2 rabbit pAb
Host species	Rabbit
Applications	WB;ELISA
Species Cross-Reactivity	Human;Mouse
Recommended dilutions	WB 1:500-2000 ELISA 1:5000-20000
Immunogen	Synthesized peptide derived from human protein . at AA range: 31-80
Specificity	CISD2 Polyclonal Antibody detects endogenous levels of protein.
Formulation	Liquid in PBS containing 50% glycerol, 0.5% BSA and 0.02% sodium azide.
Storage	Store at -20°C. Avoid repeated freeze-thaw cycles.
Protein Name	CDGSH iron-sulfur domain-containing protein 2 (Endoplasmic reticulum intermembrane small protein) (MitoNEET-related 1 protein) (Miner1) (Nutrient-deprivation autophagy factor-1) (NAF-1)
Gene Name	CISD2 CDGSH2 ERIS ZCD2
Cellular localization	Endoplasmic reticulum membrane; Single-pass membrane protein. Mitochondrion outer membrane; Single-pass membrane protein. According to PubMed:20010695, it mainly localizes to the endoplasmic reticulum. However, experiments in mouse showed that it mainly l
Purification	The antibody was affinity-purified from rabbit antiserum by affinity-chromatography using epitope-specific immunogen.
Clonality	Polyclonal
Concentration	1 mg/ml
Observed band	14kD
Human Gene ID	493856
Human Swiss-Prot Number	Q8N5K1
Alternative Names	
Background	The protein encoded by this gene is a zinc finger





protein that localizes to the endoplasmic reticulum. The encoded protein binds an iron/sulfur cluster and may be involved in calcium homeostasis. Defects in this gene are a cause of Wolfram syndrome 2. [provided by RefSeq, Mar 2011],



Western blot analysis of lysates from A431 cells, primary antibody was diluted at 1:1000, 4°over night

