

# ZBP1 rabbit pAb

Cat No.:ES11422

For research use only

## Overview

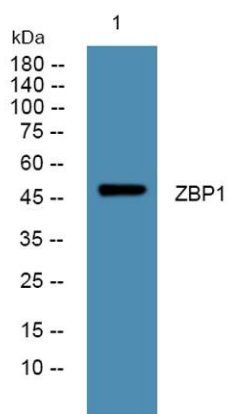
Product Name	ZBP1 rabbit pAb
Host species	Rabbit
Applications	WB;ELISA
Species Cross-Reactivity	Human;Rat;Mouse;
Recommended dilutions	WB 1:500-2000 ELISA 1:5000-20000
Immunogen	Synthesized peptide derived from human protein . at AA range: 21-70
Specificity	ZBP1 Polyclonal Antibody detects endogenous levels of protein.
Formulation	Liquid in PBS containing 50% glycerol, 0.5% BSA and 0.02% sodium azide.
Storage	Store at -20°C. Avoid repeated freeze-thaw cycles.
Protein Name	Z-DNA-binding protein 1 (Tumor stroma and activated macrophage protein DLM-1)
Gene Name	ZBP1 C20orf183 DLM1
Cellular localization	Cytoplasm . Nucleus . Mainly cytoplasmic (PubMed:16876127, PubMed:16990255). Accumulates in the nucleus in response to influenza A virus (IAV) infection: senses IAV defective viral genomes RNA in the nucleus (By similarity). .; [Isoform 7]: Cytoplasm . Nu
Purification	The antibody was affinity-purified from rabbit antiserum by affinity-chromatography using epitope-specific immunogen.
Clonality	Polyclonal
Concentration	1 mg/ml
Observed band	47kD
Human Gene ID	81030
Human Swiss-Prot Number	Q9H171
Alternative Names	
Background	This gene encodes a Z-DNA binding protein. The encoded protein plays a role in the innate immune response by binding to foreign DNA and inducing





**ELK Biotechnology**

type-I interferon production. Alternatively spliced transcript variants encoding multiple isoforms have been observed for this gene. [provided by RefSeq, Dec 2011],



Western blot analysis of lysates from SW480 cells, primary antibody was diluted at 1:1000, 4° over night



+86-27-59760950

[ELKbio@ELKbiotech.com](mailto:ELKbio@ELKbiotech.com)

[www.elkbiotech.com](http://www.elkbiotech.com)

23-2, No.388 Gaoxin 2nd Road, Wuhan East Lake Hi-tech Development Zone, Hubei, P.R.C.