

IRGM rabbit pAb

Cat No.:ES11414

For research use only

Overview

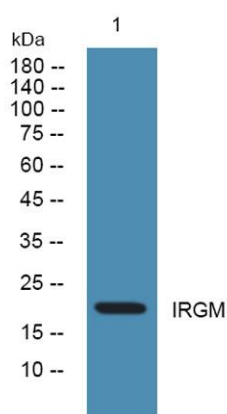
Product Name	IRGM rabbit pAb
Host species	Rabbit
Applications	WB;ELISA
Species Cross-Reactivity	Human;Rat;Mouse;
Recommended dilutions	WB 1:500-2000 ELISA 1:5000-20000
Immunogen	Synthesized peptide derived from human protein . at AA range: 101-150
Specificity	IRGM Polyclonal Antibody detects endogenous levels of protein.
Formulation	Liquid in PBS containing 50% glycerol, 0.5% BSA and 0.02% sodium azide.
Storage	Store at -20°C. Avoid repeated freeze-thaw cycles.
Protein Name	Immunity-related GTPase family M protein (EC 3.6.5.-) (Immunity-related GTPase family M protein 1) (Interferon-inducible protein 1) (LPS-stimulated RAW 264.7 macrophage protein 47 homolog) (LRG-47)
Gene Name	IRGM IFI1 IRGM1 LRG47
Cellular localization	Golgi apparatus membrane . Cell membrane . Cytoplasmic vesicle, phagosome membrane . Cytoplasmic vesicle, autophagosome membrane . Cell projection, phagocytic cup . Behaves like an integral membrane protein. Recruited to the plasma membrane around forming
Purification	The antibody was affinity-purified from rabbit antiserum by affinity-chromatography using epitope-specific immunogen.
Clonality	Polyclonal
Concentration	1 mg/ml
Observed band	19kD
Human Gene ID	345611
Human Swiss-Prot Number	A1A4Y4
Alternative Names	





Background

immunity related GTPase M(IRGM) Homo sapiens
This gene encodes a member of the p47 immunity-related GTPase family. The encoded protein may play a role in the innate immune response by regulating autophagy formation in response to intracellular pathogens. Polymorphisms that affect the normal expression of this gene are associated with a susceptibility to Crohn's disease and tuberculosis.[provided by RefSeq, Oct 2010],



Western blot analysis of lysates from SH-SY5Y cells,
primary antibody was diluted at 1:1000, 4° over night

