

FXYD5 rabbit pAb

Cat No.:ES11370

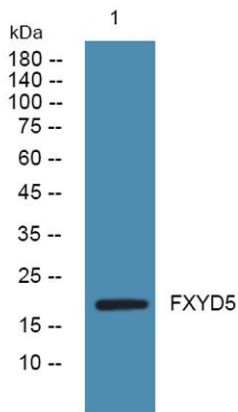
For research use only

Overview

Product Name	FXYD5 rabbit pAb
Host species	Rabbit
Applications	WB;ELISA
Species Cross-Reactivity	Human;Rat;Mouse;
Recommended dilutions	WB 1:500-2000 ELISA 1:5000-20000
Immunogen	Synthesized peptide derived from human protein . at AA range: Internal
Specificity	FXYD5 Polyclonal Antibody detects endogenous levels of protein.
Formulation	Liquid in PBS containing 50% glycerol, 0.5% BSA and 0.02% sodium azide.
Storage	Store at -20°C. Avoid repeated freeze-thaw cycles.
Protein Name	FXYD domain-containing ion transport regulator 5 (Dysadherin)
Gene Name	FXYD5 DYSAD IWU1 HSPC113 UNQ2561/PRO6241
Cellular localization	Membrane ; Single-pass type I membrane protein .
Purification	The antibody was affinity-purified from rabbit antiserum by affinity-chromatography using epitope-specific immunogen.
Clonality	Polyclonal
Concentration	1 mg/ml
Observed band	19kD
Human Gene ID	53827
Human Swiss-Prot Number	Q96DB9
Alternative Names	
Background	FXYD domain containing ion transport regulator 5(FXYD5) Homo sapiens This gene encodes a member of a family of small membrane proteins that share a 35-amino acid signature sequence domain, beginning with the sequence PFXYD and containing 7 invariant and 6 highly conserved amino acids. The approved human gene nomenclature for the family is FXYD-domain containing ion transport



regulator. Mouse FXYD5 has been termed RIC (Related to Ion Channel). FXYD2, also known as the gamma subunit of the Na,K-ATPase, regulates the properties of that enzyme. FXYD1 (phospholemman), FXYD2 (gamma), FXYD3 (MAT-8), FXYD4 (CHIF), and FXYD5 (RIC) have been shown to induce channel activity in experimental expression systems. Transmembrane topology has been established for two family members (FXYD1 and FXYD2), with the N-terminus extracellular and the C-terminus on the cytoplasmic side of the membrane. This gene product, FXYD5, is a glycoprotein that functions in the up



Western blot analysis of lysates from HCT116 cells, primary antibody was diluted at 1:1000, 4° over night

