

CLC2D rabbit pAb

Cat No.:ES11356

For research use only

Overview

Product Name	CLC2D rabbit pAb
Host species	Rabbit
Applications	WB;ELISA
Species Cross-Reactivity	Human;Mouse
Recommended dilutions	WB 1:500-2000 ELISA 1:5000-20000
Immunogen	Synthesized peptide derived from human protein . at AA range: 40-120
Specificity	CLC2D Polyclonal Antibody detects endogenous levels of protein.
Formulation	Liquid in PBS containing 50% glycerol, 0.5% BSA and 0.02% sodium azide.
Storage	Store at -20°C. Avoid repeated freeze-thaw cycles.
Protein Name	C-type lectin domain family 2 member D (Lectin-like NK cell receptor) (Lectin-like transcript 1) (LLT-1) (Osteoclast inhibitory lectin)
Gene Name	CLEC2D CLAX LLT1 OCIL
Cellular localization	Cell membrane ; Single-pass type II membrane protein .; [Isoform 2]: Endoplasmic reticulum .; [Isoform 4]: Endoplasmic reticulum .
Purification	The antibody was affinity-purified from rabbit antiserum by affinity-chromatography using epitope-specific immunogen.
Clonality	Polyclonal
Concentration	1 mg/ml
Observed band	21kD
Human Gene ID	29121
Human Swiss-Prot Number	Q9UHP7
Alternative Names	
Background	This gene encodes a member of the natural killer cell receptor C-type lectin family. The encoded protein inhibits osteoclast formation and contains a transmembrane domain near the N-terminus as well as the C-type lectin-like extracellular domain.

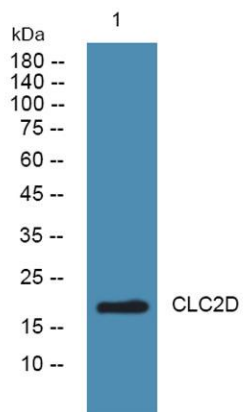




ELK Biotechnology

Several alternatively spliced transcript variants have been identified for this gene. [provided by RefSeq, Oct 2010],

Western blot analysis of lysates from Jarkat cells, primary antibody was diluted at 1:1000, 4°over night



+86-27-59760950

ELKbio@ELKbiotech.com

www.elkbiotech.com

23-2, No.388 Gaoxin 2nd Road, Wuhan East Lake Hi-tech Development Zone, Hubei, P.R.C.