

FCRLB rabbit pAb

Cat No.:ES11325

For research use only

Overview

Product Name	FCRLB rabbit pAb
Host species	Rabbit
Applications	WB;ELISA
Species Cross-Reactivity	Human;Mouse
Recommended dilutions	WB 1:500-2000 ELISA 1:5000-20000
Immunogen	Synthesized peptide derived from human protein . at AA range: 340-420
Specificity	FCRLB Polyclonal Antibody detects endogenous levels of protein.
Formulation	Liquid in PBS containing 50% glycerol, 0.5% BSA and 0.02% sodium azide.
Storage	Store at -20°C. Avoid repeated freeze-thaw cycles.
Protein Name	Fc receptor-like B (Fc receptor homolog expressed in B-cells protein 2) (FREB-2) (Fc receptor-like and mucin-like protein 2) (Fc receptor-like protein 2) (Fc receptor-related protein Y) (FcRY)
Gene Name	FCRLB FCRL2 FCRLM2 FCRY FREB2
Cellular localization	Cytoplasm . Endoplasmic reticulum . Seems not to be secreted. .
Purification	The antibody was affinity-purified from rabbit antiserum by affinity-chromatography using epitope-specific immunogen.
Clonality	Polyclonal
Concentration	1 mg/ml
Observed band	46kD
Human Gene ID	127943
Human Swiss-Prot Number	Q6BAA4
Alternative Names	
Background	FCRL2 belongs to the Fc receptor family. Fc receptors are involved in phagocytosis, antibody-dependent cell cytotoxicity, immediate hypersensitivity, and transcytosis of immunoglobulins via their ability to bind

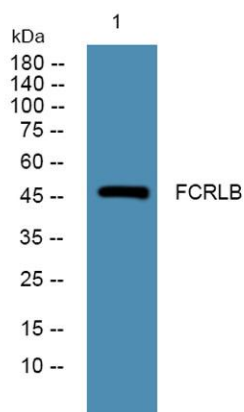




ELK Biotechnology

immunoglobulin (Ig) constant regions (Chikaev et al., 2005 [PubMed 15676285]).[supplied by OMIM, Mar 2008],

Western blot analysis of lysates from DU145 cells, primary antibody was diluted at 1:1000, 4° over night



+86-27-59760950

ELKbio@ELKbiotech.com

www.elkbiotech.com

23-2, No.388 Gaoxin 2nd Road, Wuhan East Lake Hi-tech Development Zone, Hubei, P.R.C.