



HECAM rabbit pAb

Cat No.:ES11323

For research use only

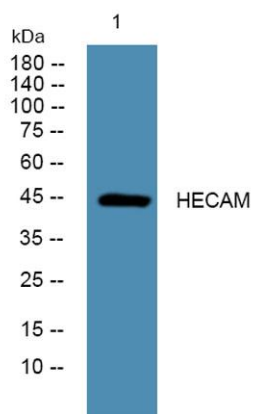
Overview

Product Name	HECAM rabbit pAb
Host species	Rabbit
Applications	WB;ELISA
Species Cross-Reactivity	Human;Mouse
Recommended dilutions	WB 1:500-2000 ELISA 1:5000-20000
Immunogen	Synthesized peptide derived from human protein . at AA range: 10-90
Specificity	HECAM Polyclonal Antibody detects endogenous levels of protein.
Formulation	Liquid in PBS containing 50% glycerol, 0.5% BSA and 0.02% sodium azide.
Storage	Store at -20°C. Avoid repeated freeze-thaw cycles.
Protein Name	Hepatocyte cell adhesion molecule (Protein hepaCAM)
Gene Name	HEPACAM
Cellular localization	Cytoplasm . Membrane; Single-pass type I membrane protein; Cytoplasmic side . In MCF-7 breast carcinoma and hepatic Hep 3B2.1-7 and Hep-G2 cell lines, localization of HEPACAM is cell density-dependent. In well spread cells, localized to punctate structure
Purification	The antibody was affinity-purified from rabbit antiserum by affinity-chromatography using epitope-specific immunogen.
Clonality	Polyclonal
Concentration	1 mg/ml
Observed band	45kD
Human Gene ID	220296
Human Swiss-Prot Number	Q14CZ8
Alternative Names	
Background	The protein encoded by this gene is a single-pass type I membrane protein that localizes to the cytoplasmic side of the cell membrane. The encoded





protein acts as a homodimer and is involved in cell motility and cell-matrix interactions. The expression of this gene is downregulated or undetectable in many cancer cell lines, so this may be a tumor suppressor gene. [provided by RefSeq, Jul 2011],



Western blot analysis of lysates from HCT116 cells,
primary antibody was diluted at 1:1000, 4°over night

