

FKBP2 rabbit pAb

Cat No.:ES11313

For research use only

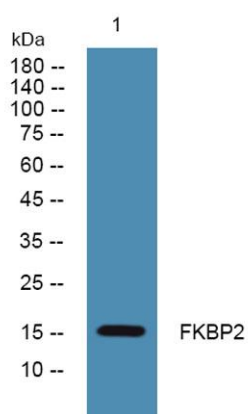
Overview

Product Name	FKBP2 rabbit pAb
Host species	Rabbit
Applications	WB;ELISA
Species Cross-Reactivity	Human;Mouse
Recommended dilutions	WB 1:500-2000 ELISA 1:5000-20000
Immunogen	Synthesized peptide derived from human protein . at AA range: 80-160
Specificity	FKBP2 Polyclonal Antibody detects endogenous levels of protein.
Formulation	Liquid in PBS containing 50% glycerol, 0.5% BSA and 0.02% sodium azide.
Storage	Store at -20°C. Avoid repeated freeze-thaw cycles.
Protein Name	Peptidyl-prolyl cis-trans isomerase FKBP2 (PPlase FKBP2) (EC 5.2.1.8) (13 kDa FK506-binding protein) (13 kDa FKBP) (FKBP-13) (FK506-binding protein 2) (FKBP-2) (Immunophilin FKBP13) (Rotamase)
Gene Name	FKBP2 FKBP13
Cellular localization	Endoplasmic reticulum membrane ; Peripheral membrane protein .
Purification	The antibody was affinity-purified from rabbit antiserum by affinity-chromatography using epitope-specific immunogen.
Clonality	Polyclonal
Concentration	1 mg/ml
Observed band	15kD
Human Gene ID	2286
Human Swiss-Prot Number	P26885
Alternative Names	
Background	The protein encoded by this gene is a member of the immunophilin protein family, which play a role in immunoregulation and basic cellular processes involving protein folding and trafficking. This encoded protein is a cis-trans prolyl isomerase that





binds the immunosuppressants FK506 and rapamycin. It is thought to function as an ER chaperone and may also act as a component of membrane cytoskeletal scaffolds. Multiple alternatively spliced variants, encoding the same protein, have been identified. [provided by RefSeq, Sep 2008],



Western blot analysis of lysates from DU145 cells, primary antibody was diluted at 1:1000, 4° over night

