



# TRML1 rabbit pAb

Cat No.:ES11304

For research use only

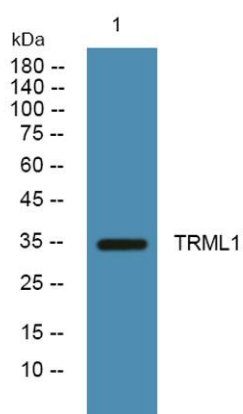
## Overview

Product Name	TRML1 rabbit pAb
Host species	Rabbit
Applications	WB;ELISA
Species Cross-Reactivity	Human;Mouse
Recommended dilutions	WB 1:500-2000 ELISA 1:5000-20000
Immunogen	Synthesized peptide derived from human protein . at AA range: 30-110
Specificity	TRML1 Polyclonal Antibody detects endogenous levels of protein.
Formulation	Liquid in PBS containing 50% glycerol, 0.5% BSA and 0.02% sodium azide.
Storage	Store at -20°C. Avoid repeated freeze-thaw cycles.
Protein Name	Trem-like transcript 1 protein (TLT-1) (Triggering receptor expressed on myeloid cells-like protein 1)
Gene Name	TREML1 TLT1 UNQ1825/PRO3438
Cellular localization	Cell membrane ; Single-pass type I membrane protein . Cytoplasm . Sequestered in cytoplasmic vesicles in resting platelets (PubMed:15100151). Transported to the cell surface after stimulation by thrombin (PubMed:15100151). Soluble fragments can be release
Purification	The antibody was affinity-purified from rabbit antiserum by affinity-chromatography using epitope-specific immunogen.
Clonality	Polyclonal
Concentration	1 mg/ml
Observed band	34kD
Human Gene ID	340205
Human Swiss-Prot Number	Q86YW5
Alternative Names	
Background	This gene encodes a member of the triggering receptor expressed on myeloid cells-like (TREM) family. The encoded protein is a type 1 single Ig





domain orphan receptor localized to the alpha-granule membranes of platelets. The encoded protein is involved in platelet aggregation, inflammation, and cellular activation and has been linked to Gray platelet syndrome. Alternative splicing results in multiple transcript variants [provided by RefSeq, Nov 2012],



Western blot analysis of lysates from DU145 cells, primary antibody was diluted at 1:1000, 4°over night

