

TRML2 rabbit pAb

Cat No.:ES11279

For research use only

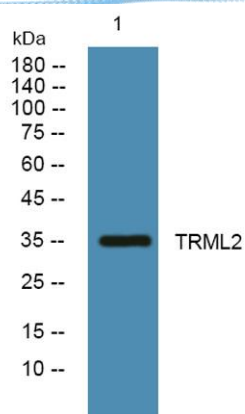
Overview

Product Name	TRML2 rabbit pAb
Host species	Rabbit
Applications	WB;ELISA
Species Cross-Reactivity	Human;Mouse
Recommended dilutions	WB 1:500-2000 ELISA 1:5000-20000
Immunogen	Synthesized peptide derived from human protein . at AA range: 30-110
Specificity	TRML2 Polyclonal Antibody detects endogenous levels of protein.
Formulation	Liquid in PBS containing 50% glycerol, 0.5% BSA and 0.02% sodium azide.
Storage	Store at -20°C. Avoid repeated freeze-thaw cycles.
Protein Name	Trem-like transcript 2 protein (TLT-2) (Triggering receptor expressed on myeloid cells-like protein 2)
Gene Name	TREML2 C6orf76 TLT2 UNQ6268/PRO20473
Cellular localization	Cell membrane ; Single-pass type I membrane protein .
Purification	The antibody was affinity-purified from rabbit antiserum by affinity-chromatography using epitope-specific immunogen.
Clonality	Polyclonal
Concentration	1 mg/ml
Observed band	35kD
Human Gene ID	79865
Human Swiss-Prot Number	Q5T2D2
Alternative Names	
Background	TREML2 is located in a gene cluster on chromosome 6 with the single Ig variable (IgV) domain activating receptors TREM1 (MIM 605085) and TREM2 (MIM 605086), but it has distinct structural and functional properties (Allcock et al., 2003 [PubMed 12645956]).[supplied by OMIM, Mar 2008],





ELK Biotechnology



Western blot analysis of lysates from U2OS cells, primary antibody was diluted at 1:1000, 4° over night



+86-27-59760950

ELKbio@ELKbiotech.com

www.elkbiotech.com

23-2, No.388 Gaoxin 2nd Road, Wuhan East Lake Hi-tech Development Zone, Hubei, P.R.C.