



SMAGP rabbit pAb

Cat No.:ES11260

For research use only

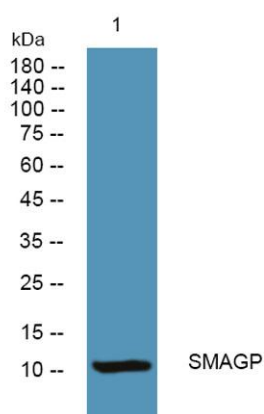
Overview

Product Name	SMAGP rabbit pAb
Host species	Rabbit
Applications	WB;ELISA
Species Cross-Reactivity	Human;Rat;Mouse
Recommended dilutions	WB 1:500-2000 ELISA 1:5000-20000
Immunogen	Synthesized peptide derived from human protein . at AA range: 30-110
Specificity	SMAGP Polyclonal Antibody detects endogenous levels of protein.
Formulation	Liquid in PBS containing 50% glycerol, 0.5% BSA and 0.02% sodium azide.
Storage	Store at -20°C. Avoid repeated freeze-thaw cycles.
Protein Name	Small cell adhesion glycoprotein (Small transmembrane and glycosylated protein)
Gene Name	SMAGP
Cellular localization	Cell membrane ; Single-pass type III membrane protein . Cytoplasmic vesicle membrane ; Single-pass type III membrane protein . Predominantly on lateral parts of the membrane, at cell-cell epithelial junctions (PubMed:15021913). Detected on cytoplasmic mem
Purification	The antibody was affinity-purified from rabbit antiserum by affinity-chromatography using epitope-specific immunogen.
Clonality	Polyclonal
Concentration	1 mg/ml
Observed band	10kD
Human Gene ID	57228
Human Swiss-Prot Number	Q0VAQ4
Alternative Names	
Background	function:May play a role in epithelial cell-cell contacts. May play a role in tumor invasiveness and metastasis formation.,PTM:O-glycosylated. The





O-glycan is modified with sialic acid residues.,similarity:Belongs to the SMAGP family.,subcellular location:Predominantly on lateral parts of the membrane, at cell-cell epithelial junctions. Detected on cytoplasmic membranes in undifferentiated tumors.,tissue specificity:Detected in breast, endometrium, colon and biliary tract. Detected in polarized epithelial structures characterized by cell-cell adhesion (at protein level).,



Western blot analysis of lysates from DU145 cells, primary antibody was diluted at 1:1000, 4°over night

