



ARC rabbit pAb

Cat No.:ES11228

For research use only

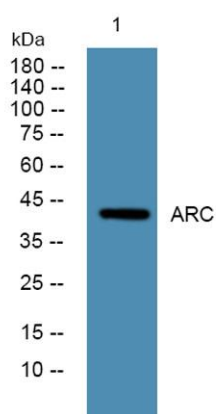
Overview

Product Name	ARC rabbit pAb
Host species	Rabbit
Applications	WB;ELISA
Species Cross-Reactivity	Human;Rat;Mouse
Recommended dilutions	WB 1:500-2000 ELISA 1:5000-20000
Immunogen	Synthesized peptide derived from human protein . at AA range: 70-150
Specificity	ARC Polyclonal Antibody detects endogenous levels of protein.
Formulation	Liquid in PBS containing 50% glycerol, 0.5% BSA and 0.02% sodium azide.
Storage	Store at -20°C. Avoid repeated freeze-thaw cycles.
Protein Name	Activity-regulated cytoskeleton-associated protein (ARC/ARG3.1) (Activity-regulated gene 3.1 protein homolog) (Arg3.1)
Gene Name	ARC KIAA0278
Cellular localization	Extracellular vesicle membrane ; Lipid-anchor . Cell junction, synapse, postsynaptic cell membrane ; Lipid-anchor . Cell junction, synapse . Cell junction, synapse, postsynaptic density . Early endosome membrane . Cell projection, dendrite . Cytoplasm, cy
Purification	The antibody was affinity-purified from rabbit antiserum by affinity-chromatography using epitope-specific immunogen.
Clonality	Polyclonal
Concentration	1 mg/ml
Observed band	43kD
Human Gene ID	23237
Human Swiss-Prot Number	Q7LC44
Alternative Names	
Background	function:Required for consolidation of synaptic plasticity as well as formation of long-term memory. Regulates endocytosis of AMPA receptors in





response to synaptic activity. Required for homeostatic synaptic scaling of AMPA receptors.,similarity:Belongs to the ARC/ARG3.1 family.,subcellular location:Associated with the cell cortex of neuronal soma and dendrites. Enriched in postsynaptic density of dendritic spines. Associated with the sperm tail.,subunit:Interacts with SH3GL1/endophilin-2, SH3GL3/endophilin-3 and DNM2/DYN2.,



Western blot analysis of lysates from KB cells, primary antibody was diluted at 1:1000, 4°over night

