

# CRTAM rabbit pAb

Cat No.:ES11219

For research use only

## Overview

Product Name	CRTAM rabbit pAb
Host species	Rabbit
Applications	WB;ELISA
Species Cross-Reactivity	Human;Mouse
Recommended dilutions	WB 1:500-2000 ELISA 1:5000-20000
Immunogen	Synthesized peptide derived from human protein . at AA range: 260-340
Specificity	CRTAM Polyclonal Antibody detects endogenous levels of protein.
Formulation	Liquid in PBS containing 50% glycerol, 0.5% BSA and 0.02% sodium azide.
Storage	Store at -20°C. Avoid repeated freeze-thaw cycles.
Protein Name	Cytotoxic and regulatory T-cell molecule (Class-I MHC-restricted T-cell-associated molecule) (CD antigen CD355)
Gene Name	CRTAM
Cellular localization	Cell membrane ; Single-pass type I membrane protein . In a subset of CD4+ T-cells, colocalizes with SCRIB at the immunological synapse during the late phase of T-cell activation. .
Purification	The antibody was affinity-purified from rabbit antiserum by affinity-chromatography using epitope-specific immunogen.
Clonality	Polyclonal
Concentration	1 mg/ml
Observed band	43kD
Human Gene ID	56253
Human Swiss-Prot Number	O95727
Alternative Names	
Background	cytotoxic and regulatory T-cell molecule(CRTAM) Homo sapiens      The CRTAM gene is upregulated in CD4 (see MIM 186940)-positive and CD8 (see CD8A; MIM 186910)-positive T cells and encodes a

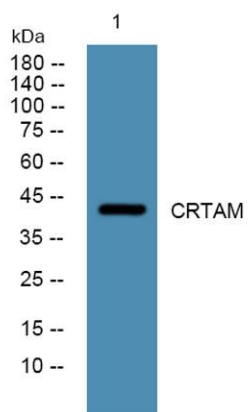




**ELK Biotechnology**

type I transmembrane protein with V and C1-like Ig domains (Yeh et al., 2008 [PubMed 18329370]).[supplied by OMIM, Feb 2009],

Western blot analysis of lysates from PC12 cells, primary antibody was diluted at 1:1000, 4°over night



+86-27-59760950

ELKbio@ELKbiotech.com

[www.elkbiotech.com](http://www.elkbiotech.com)

23-2, No.388 Gaoxin 2nd Road,Wuhan East Lake Hi-tech Development Zone, Hubei , P.R.C