



# LY86 rabbit pAb

Cat No.:ES11209

For research use only

## Overview

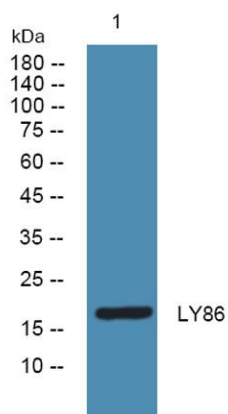
Product Name	LY86 rabbit pAb
Host species	Rabbit
Applications	WB;ELISA
Species Cross-Reactivity	Human;Mouse
Recommended dilutions	WB 1:500-2000 ELISA 1:5000-20000
Immunogen	Synthesized peptide derived from human protein . at AA range: 80-160
Specificity	LY86 Polyclonal Antibody detects endogenous levels of protein.
Formulation	Liquid in PBS containing 50% glycerol, 0.5% BSA and 0.02% sodium azide.
Storage	Store at -20°C. Avoid repeated freeze-thaw cycles.
Protein Name	Lymphocyte antigen 86 (Ly-86) (Protein MD-1)
Gene Name	LY86 MD1
Cellular localization	Secreted, extracellular space. Associated with CD180 at the cell surface.
Purification	The antibody was affinity-purified from rabbit antiserum by affinity-chromatography using epitope-specific immunogen.
Clonality	Polyclonal
Concentration	1 mg/ml
Observed band	17kD
Human Gene ID	9450
Human Swiss-Prot Number	O95711
Alternative Names	
Background	function:May cooperate with CD180 and TLR4 to mediate the innate immune response to bacterial lipopolysaccharide (LPS) and cytokine production. Important for efficient CD180 cell surface expression.,induction:In monocytes, down-regulated by the cell-wall fraction of Mycobacterium bovis (BCG-CWS).,subcellular location:Associated with CD180 at the cell





**ELK Biotechnology**

surface.,subunit: Binds CD180.,tissue  
specificity: Highly expressed in B-cells, monocytes  
and tonsil.,



Western blot analysis of lysates from U2OS cells, primary  
antibody was diluted at 1:1000, 4° over night



+86-27-59760950

ELKbio@ELKbiotech.com

[www.elkbiotech.com](http://www.elkbiotech.com)

23-2, No.388 Gaoxin 2nd Road, Wuhan East Lake Hi-tech Development Zone, Hubei, P.R.C.