

RGMC rabbit pAb

Cat No.:ES11203

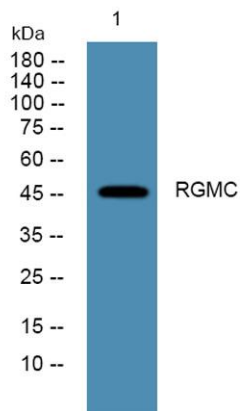
For research use only

Overview

Product Name	RGMC rabbit pAb
Host species	Rabbit
Applications	WB;ELISA
Species Cross-Reactivity	Human;Rat;Mouse
Recommended dilutions	WB 1:500-2000 ELISA 1:5000-20000
Immunogen	Synthesized peptide derived from human protein . at AA range: 270-350
Specificity	RGMC Polyclonal Antibody detects endogenous levels of protein.
Formulation	Liquid in PBS containing 50% glycerol, 0.5% BSA and 0.02% sodium azide.
Storage	Store at -20°C. Avoid repeated freeze-thaw cycles.
Protein Name	Hemojuvelin (Hemochromatosis type 2 protein) (RGM domain family member C)
Gene Name	HFE2 HJV RGMC
Cellular localization	Cell membrane ; Lipid-anchor, GPI-anchor . Also released in the extracellular space. .
Purification	The antibody was affinity-purified from rabbit antiserum by affinity-chromatography using epitope-specific immunogen.
Clonality	Polyclonal
Concentration	1 mg/ml
Observed band	46kD
Human Gene ID	148738
Human Swiss-Prot Number	Q6ZVN8
Alternative Names	
Background	hemochromatosis type 2 (juvenile)(HFE2) Homo sapiens The product of this gene is involved in iron metabolism. It may be a component of the signaling pathway which activates hepcidin or it may act as a modulator of hepcidin expression. It could also represent the cellular receptor for hepcidin. Two uORFs in the 5' UTR negatively regulate the



expression and activity of the encoded protein. Alternatively spliced transcript variants encoding different isoforms have been identified for this gene. Defects in this gene are the cause of hemochromatosis type 2A, also called juvenile hemochromatosis (JH). JH is an early-onset autosomal recessive disorder due to severe iron overload resulting in hypogonadotropic hypogonadism, hepatic fibrosis or cirrhosis and cardiomyopathy, occurring typically before age of 30. [provided by RefSeq, Oct 2015],



Western blot analysis of lysates from K562 cells, primary antibody was diluted at 1:1000, 4° over night

