

ITLN1 rabbit pAb

Cat No.:ES11184

For research use only

Overview

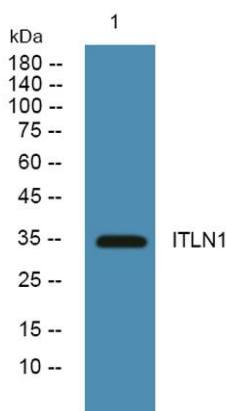
Product Name	ITLN1 rabbit pAb
Host species	Rabbit
Applications	WB;ELISA
Species	Human;Rat;Mouse;
Cross-Reactivity	
Recommended dilutions	WB 1:500-2000 ELISA 1:5000-20000
Immunogen	Synthesized peptide derived from human protein . at AA range: 110-190
Specificity	ITLN1 Polyclonal Antibody detects endogenous levels of protein.
Formulation	Liquid in PBS containing 50% glycerol, 0.5% BSA and 0.02% sodium azide.
Storage	Store at -20°C. Avoid repeated freeze-thaw cycles.
Protein Name	Intelectin-1 (ITLN-1) (Endothelial lectin HL-1) (Galactofuranose-binding lectin) (Intestinal lactoferrin receptor) (Omentin)
Gene Name	ITLN1 INTL ITLN LFR UNQ640/PRO1270
Cellular localization	Cell membrane ; Lipid-anchor, GPI-anchor . Secreted . Enriched in lipid rafts. .
Purification	The antibody was affinity-purified from rabbit antiserum by affinity-chromatography using epitope-specific immunogen.
Clonality	Polyclonal
Concentration	1 mg/ml
Observed band	34kD
Human Gene ID	55600
Human Swiss-Prot Number	Q8WWA0
Alternative Names	
Background	developmental stage:Found in fetal small intestine and thymus.,function:Has no effect on basal glucose uptake but enhances insulin-stimulated glucose uptake in adipocytes.





Increases AKT phosphorylation in the absence and presence of insulin. May play a role in the defense system against microorganisms. May specifically recognize carbohydrate chains of pathogens and bacterial components containing galactofuranosyl residues, in a calcium-dependent manner. May be involved in iron metabolism.,mass spectrometry:

PubMed:17621593,PTM:N-glycosylated.,similarity:Contains 1 fibrinogen C-terminal domain.,subcellular location:Enriched in lipid rafts.,subunit:Homotrimer; disulfide-linked.,tissue specificity:Highly expressed in omental adipose tissue where it is found in stromal vascular cells but not in fat cells but is barely detectable in subcutaneous adipose tissue (at protein level). Highly expressed in the small intestine. Also found in the heart, testis, colon, salivary gland, skeletal muscle, pancreas and thyroid and, to a lesser degree, in the uterus, spleen, prostate, lymph node and thymus.,



Western blot analysis of lysates from PC12 cells, primary antibody was diluted at 1:1000, 4° over night

