

# PYGO2 rabbit pAb

Cat No.:ES11123

For research use only

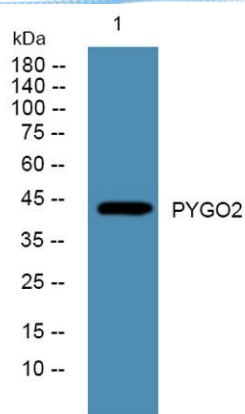
## Overview

Product Name	PYGO2 rabbit pAb
Host species	Rabbit
Applications	WB;ELISA
Species Cross-Reactivity	Human;Rat;Mouse;
Recommended dilutions	WB 1:500-2000 ELISA 1:5000-20000
Immunogen	Synthesized peptide derived from part region of human protein
Specificity	PYGO2 Polyclonal Antibody detects endogenous levels of protein.
Formulation	Liquid in PBS containing 50% glycerol, 0.5% BSA and 0.02% sodium azide.
Storage	Store at -20°C. Avoid repeated freeze-thaw cycles.
Protein Name	Pygopus homolog 2
Gene Name	PYGO2 PP7910
Cellular localization	Nucleus .
Purification	The antibody was affinity-purified from rabbit antiserum by affinity-chromatography using epitope-specific immunogen.
Clonality	Polyclonal
Concentration	1 mg/ml
Observed band	44kD
Human Gene ID	90780
Human Swiss-Prot Number	Q9BRQ0
Alternative Names	
Background	function:Involved in signal transduction through the Wnt pathway.,sequence caution:Sequencing errors.,similarity:Contains 1 PHD-type zinc finger.,subunit:Binds to BCL9 via the PHD-type zinc finger motif, and thereby becomes part of the nuclear beta-catenin/TCF complex.,





**ELK Biotechnology**



Western blot analysis of lysates from U2OS cells, primary antibody was diluted at 1:1000, 4° over night



+86-27-59760950

ELKbio@ELKbiotech.com

[www.elkbiotech.com](http://www.elkbiotech.com)

23-2, No.388 Gaoxin 2nd Road, Wuhan East Lake Hi-tech Development Zone, Hubei, P.R.C.