

# HBM rabbit pAb

Cat No.:ES11074

For research use only

## Overview

Product Name	HBM rabbit pAb
Host species	Rabbit
Applications	WB;ELISA
Species Cross-Reactivity	Human;Rat;Mouse;
Recommended dilutions	WB 1:500-2000 ELISA 1:5000-20000
Immunogen	Synthesized peptide derived from part region of human protein
Specificity	HBM Polyclonal Antibody detects endogenous levels of protein.
Formulation	Liquid in PBS containing 50% glycerol, 0.5% BSA and 0.02% sodium azide.
Storage	Store at -20°C. Avoid repeated freeze-thaw cycles.
Protein Name	Hemoglobin subunit mu (Hemoglobin mu chain) (Mu-globin)
Gene Name	HBM HBAP2
Cellular localization	hemoglobin complex,extracellular exosome,
Purification	The antibody was affinity-purified from rabbit antiserum by affinity-chromatography using epitope-specific immunogen.
Clonality	Polyclonal
Concentration	1 mg/ml
Observed band	15kD
Human Gene ID	3042
Human Swiss-Prot Number	Q6B0K9
Alternative Names	
Background	The human alpha globin gene cluster located on chromosome 16 spans about 30 kb and includes seven loci: 5'- zeta - pseudozeta - mu - pseudoalpha-1 - alpha-2 - alpha-1 - theta - 3'. This gene has an ORF encoding a 141 aa polypeptide which is similar to the delta globins found in reptiles and birds. This locus was originally described as a pseudogene; however, it is currently thought to be a

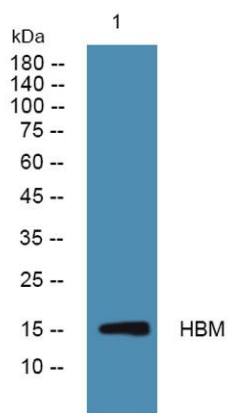




**ELK Biotechnology**

protein-coding gene. [provided by RefSeq, Jul 2008],

Western blot analysis of lysates from HCT116 cells,  
primary antibody was diluted at 1:1000, 4° over night



+86-27-59760950

ELKbio@ELKbiotech.com

[www.elkbiotech.com](http://www.elkbiotech.com)

23-2, No.388 Gaoxin 2nd Road, Wuhan East Lake Hi-tech Development Zone, Hubei, P.R.C.