

MXRA5 rabbit pAb

Cat No.:ES11049

For research use only

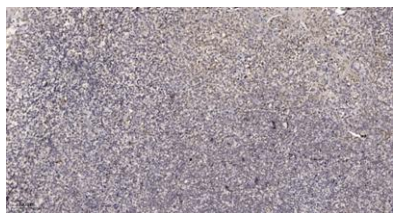
Overview

Product Name	MXRA5 rabbit pAb
Host species	Rabbit
Applications	IHC;IF
Species Cross-Reactivity	Human;Rat;Mouse;
Recommended dilutions	IHC-p 1:50-300
Immunogen	Synthesized peptide derived from part region of human protein
Specificity	MXRA5 Polyclonal Antibody detects endogenous levels of protein.
Formulation	Liquid in PBS containing 50% glycerol, 0.5% BSA and 0.02% sodium azide.
Storage	Store at -20°C. Avoid repeated freeze-thaw cycles.
Protein Name	Matrix-remodeling-associated protein 5 (Adhesion protein with leucine-rich repeats and immunoglobulin domains related to perlecan) (Adlican)
Gene Name	MXRA5
Cellular localization	Secreted .
Purification	The antibody was affinity-purified from rabbit antiserum by affinity-chromatography using epitope-specific immunogen.
Clonality	Polyclonal
Concentration	1 mg/ml
Observed band	311kD
Human Gene ID	25878
Human Swiss-Prot Number	Q9NR99
Alternative Names	
Background	This gene encodes one of the matrix-remodelling associated proteins. This protein contains 7 leucine-rich repeats and 12 immunoglobulin-like C2-type domains related to perlecan. This gene has a pseudogene on chromosome Y. [provided by RefSeq, Mar 2010],





ELK Biotechnology



Immunohistochemical analysis of paraffin-embedded human tonsil. 1, Antibody was diluted at 1:200(4° overnight). 2, Tris-EDTA,pH9.0 was used for antigen retrieval. 3,Secondary antibody was diluted at 1:200(room temperature, 30min).



+86-27-59760950

ELKbio@ELKbiotech.com

www.elkbiotech.com

23-2, No.388 Gaoxin 2nd Road,Wuhan East Lake Hi-tech Development Zone, Hubei , P.R.C