



SPAG8 rabbit pAb

Cat No.:ES11041

For research use only

Overview

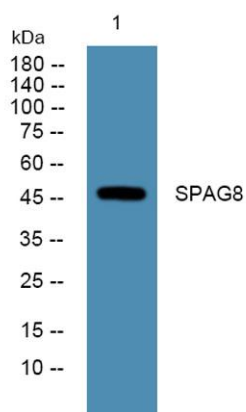
Product Name	SPAG8 rabbit pAb
Host species	Rabbit
Applications	WB;ELISA
Species Cross-Reactivity	Human;Rat;Mouse;
Recommended dilutions	WB 1:500-2000 ELISA 1:5000-20000
Immunogen	Synthesized peptide derived from part region of human protein
Specificity	SPAG8 Polyclonal Antibody detects endogenous levels of protein.
Formulation	Liquid in PBS containing 50% glycerol, 0.5% BSA and 0.02% sodium azide.
Storage	Store at -20°C. Avoid repeated freeze-thaw cycles.
Protein Name	Sperm-associated antigen 8 (HSD-1) (Sperm membrane protein 1) (SMP-1) (Sperm membrane protein BS-84)
Gene Name	SPAG8
Cellular localization	Cytoplasm . Nucleus . Cytoplasmic vesicle, secretory vesicle, acrosome . Cytoplasm, cytoskeleton, microtubule organizing center . Cytoplasm, cytoskeleton, spindle . In mature sperm cells, detected in the acrosomal region of the head and in the middle piec
Purification	The antibody was affinity-purified from rabbit antiserum by affinity-chromatography using epitope-specific immunogen.
Clonality	Polyclonal
Concentration	1 mg/ml
Observed band	46kD
Human Gene ID	26206
Human Swiss-Prot Number	Q99932
Alternative Names	
Background	The correlation of anti-sperm antibodies with cases of unexplained infertility implicates a role for these





antibodies in blocking fertilization. Improved diagnosis and treatment of immunologic infertility, as well as identification of proteins for targeted contraception, are dependent on the identification and characterization of relevant sperm antigens. The protein encoded by this gene is recognized by sperm agglutinating antibodies from an infertile woman. This protein is localized in germ cells of the testis at all stages of spermatogenesis and is localized to the acrosomal region of mature spermatozoa. This protein interacts with ACT (activator of CREM in testis) and may play a role in CREM (cAMP response element modulator)-ACT-mediated gene transcription during spermatogenesis. This protein may also play a role in spermatogenesis by regulating microtubule formation and cell division.

AI



Western blot analysis of lysates from PC12 cells, primary antibody was diluted at 1:1000, 4°over night

